

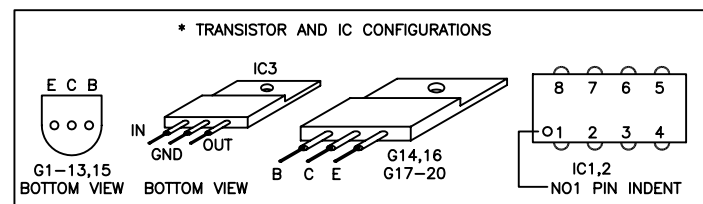


2005.11.04

1. UNLESS OTHERWISE SPECIFIED:
ALL RESISTORS ARE 1/4W, +/-5% CAPACITORS
ARE IN MFD.

2. "  " DENOTES COMMON CONNECTION.

3. "  " DENOTES CHASSIS CONNECTION.



| MODEL | POWER LINE CURRENT | CB 101 HOLD CURRENT 120V OPT | INPUT POWER CONSUMP | T101 | T102 | C27, C37 | R59 | R61 | R66 | R33 | R81—R84 | IC3 |
|-------|--------------------------|------------------------------------|---------------------------|------------|------------|------------|------|------|------|----------|-----------|-----|
| C100 | 2.2A | 2.5A | 220W | 83—875—000 | 83—522—000 | 4700 / 50V | 820 | 10K | 12K | 330 1/2W | 0.47 / 3W | 18V |
| C60 | 1.3A | 1.6A | 148W | 83—874—000 | 83—521—000 | 4700 / 50V | 1K | 8.2K | 10K | JUMPER | 0.47 / 3W | 18V |
| C35 | 0.9A | 1.0A | 85W | 83—873—000 | 83—520—000 | 3300 / 50V | 1.5K | 6.8K | 8.2K | JUMPER | 0.33 / 3W | 15V |