

[Register](#) [Log in](#) [Shopping Cart \(0\)](#) [Wishlist \(0\)](#)

0

0

[Like](#)

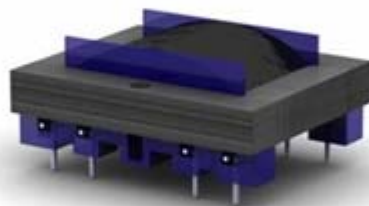
22

[HOME](#) [PRODUCTS](#) [NEW PRODUCTS](#) [SUPPORT](#) [MY ACCOUNT](#) [CONTACT US](#)

Search store

[Search](#)[EDCORUSA / AUDIO MATCHERS / PC MOUNT MATCHING TRANSFORMERS / PC SERIES MATCHINGS TRANSFORMERS / PC600/15K](#)**SHOPPING CART**

You have no items in your shopping cart.

**CATEGORIES**[Audio Attenuators](#)[Audio Combiner &](#)[Splitters](#)[Audio Matchers](#)[Mono Matchers](#)[Stereo Matchers](#)[Microphone Matching](#)[Transformers](#)[PC Mount Matching](#)[Transformers](#)[MX Series Matching](#)[Transformers](#)[MXL Series Matching](#)[Transformers](#)[PC Series Matchings](#)[Transformers](#)[PCW Series](#)[Matching](#)**PC600/15K**

1/4W 600 Ohms to 15K Ohms (1:5)  
line level matching transformer.

Current rating is 0.00. Total votes 0.

**\$6.37**[Add to cart](#)[Add to wishlist](#)

Availability: Product is built to order.

[Add to compare list](#)**Design**

Mathematically designed to produce a turns ratio of 1:5 for line level signals.

**Primary (Input)**

Designed for a balanced or unbalanced 600 Ohms line level signal.

## Secondary (Output)

Designed for a balanced or unbalanced 15K Ohms line level signal.

## Magnet Wire

All units are wound with the finest virgin [copper magnet wire](#). All windings use heavy insulated wire to provide excellent manufacturing yield, lower customer cost and superior life.

## The Core

EDCOR uses the finest [M6 line grain oriented steel](#) cores. Each unit is hand stacked to assure at least 92% stack.

## The Bobbins

EDCOR's royal blue [bobbin](#) with [black finishing tape](#).

## Termination/Mounting

This unit is designed for [printed circuit boards](#). For footprint and suggested hole and pad size please see the dimensional drawing.

### Transformers

[Open Frame Matching](#)

[Transformers](#)

[Audio Distribution](#)

[Matching Transformers](#)

[XS Series Specialty](#)

[Matchers](#)

[Stereo to Mono Couplers](#)

[Audio Distribution](#)

[Transformers](#)

[Communications & Signal](#)

[Transformers](#)

[Class X Transformers](#)

[Power Transformers](#)

[Chokes & Inductors](#)

[Tinker Box](#)

[Project Packages](#)

[DIY Bargains](#)

[Custom Products](#)

[EDCOR Apparel](#)

[Product Specifications](#)

[Product reviews](#)

[Product tags](#)

### Schematic



### RoHS



### Wattage

0.25W

### Input Maximum Voltage

5Vrms

### Turns Ratio

1:5

### Primary (input) Impedance



600 Ohms

### Secondary (output) Impedance

15K Ohms

### Frequency Response

20~20K Hz., <1dBu

<b>THD+Noise</b>	<0.05% @ 1K Hz.
<b>Insertion Loss</b>	0.5 dB
<b>Bobbin Material</b>	Glass Filled Nylon 6/6
<b>Flamability Rating</b>	Class B 130°C
<b>Core Material</b>	M6 29 ga. line grain oriented steel
<b>Termination</b>	8 pin PCB
<b>Mounting</b>	Printed circuit board mounted (PCB)
<b>Weight</b>	0.2 lbs.
<b>Dimensions</b>	1.62" (L) x 1.33" (W) x 0.64" (H)
<b>Dimensional Drawing</b>	 <a href="#">15000-EI050-025-P08</a>
<b>Manual</b>	 <a href="#">PC Series Manual</a>

#### CUSTOMERS WHO BOUGHT THIS ITEM ALSO BOUGHT

XSM15K/600



XPWR128-120



PC600/10K



[EDCOR](#) | [Products](#) | [New products](#) | [Support](#) | [Contact Us](#) | [Who is EDCOR?](#) | [A look inside EDCOR](#) | [Sitemap](#)  
[Privacy Policy](#) | [Terms of Use](#) | [Permissions and Trademarks](#) | [Terms of Purchase](#) | [Shipping & Returns](#)



Copyright © 1997 - 2011 EDCOR Electronics Corporation. All rights reserved.  
Use of this website signifies your agreement to the Terms and Condition of Use and Privacy Policy.

EDCORUSA 1.90