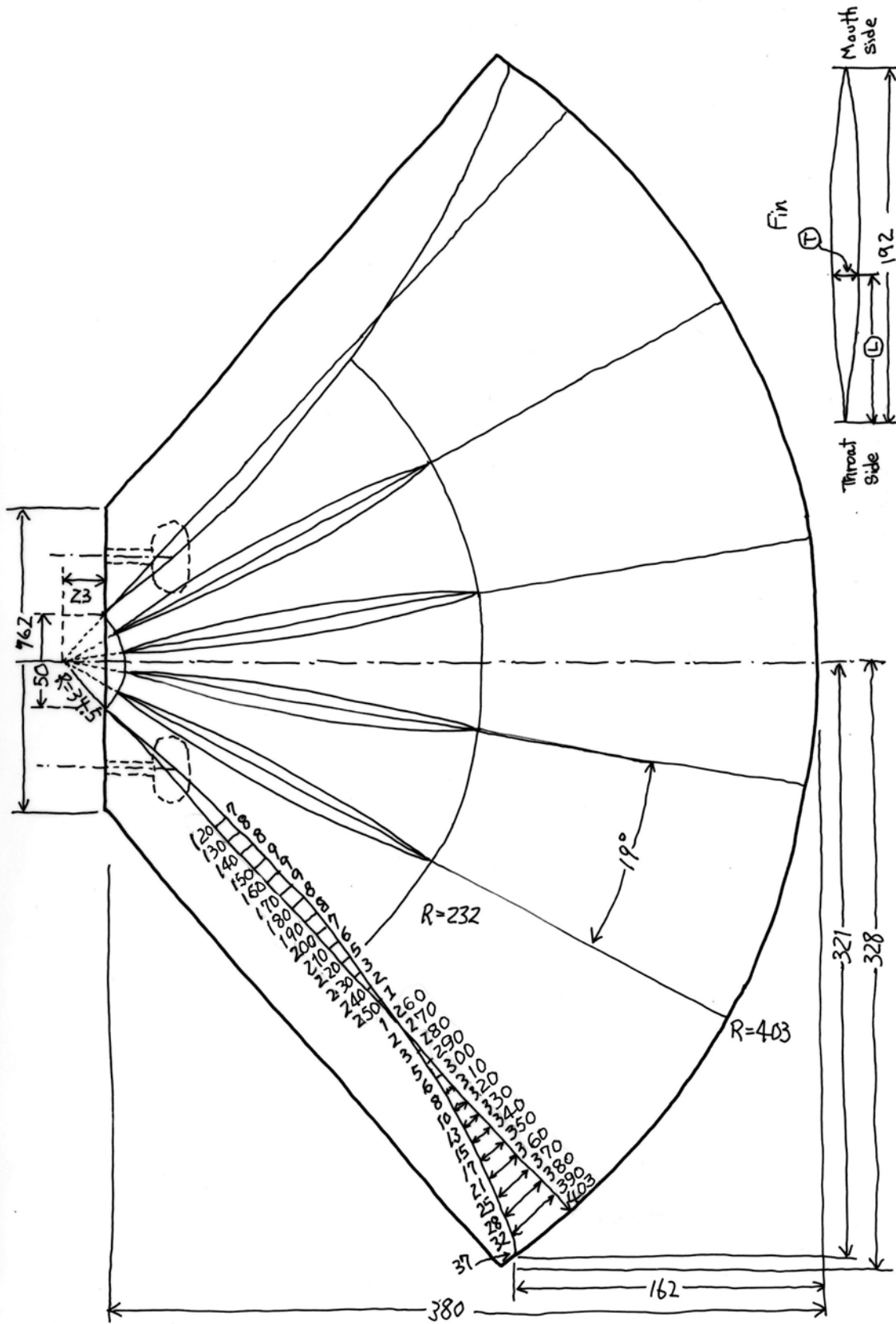
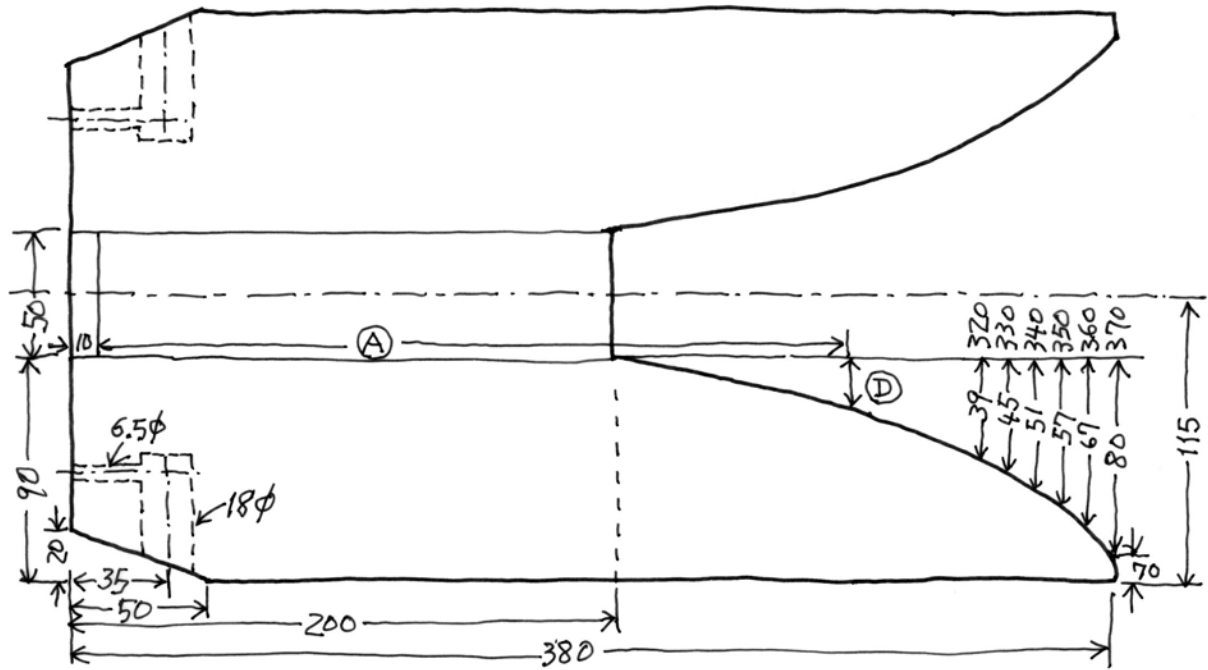


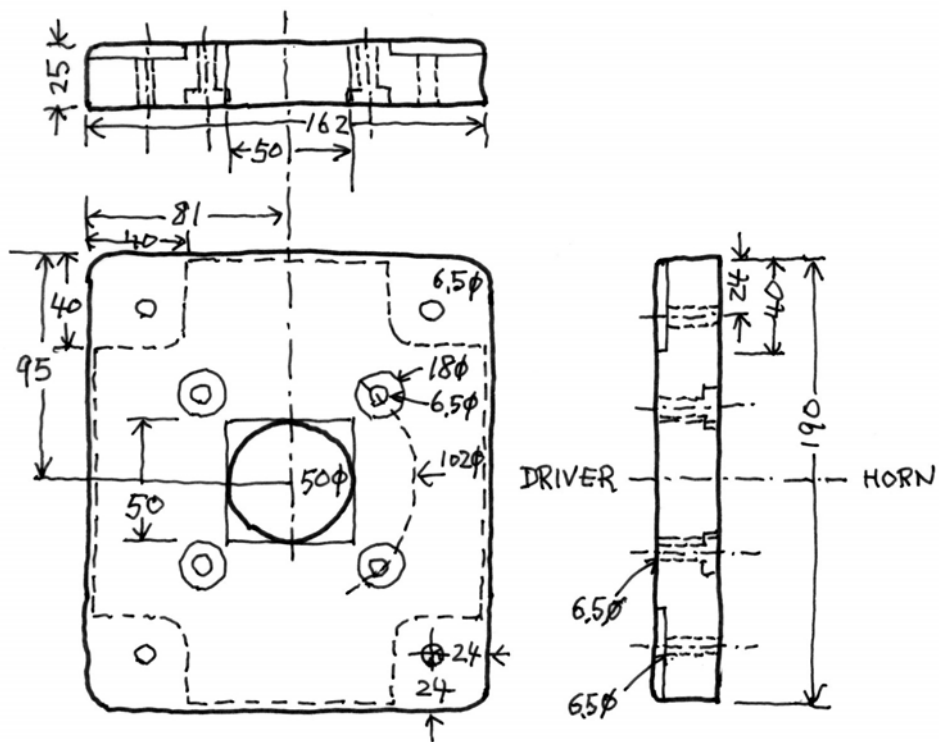
A-290 Wood Horn Drawing



Cross section of A-290 Horn



Driver Adapter



Horn Curve

(A)mm	(D)mm
0 -	0.0
- 190	0.0
200	1.5
210	3.3
220	5.2
230	7.4
240	9.7
250	12.3
260	15.0
270	18.1
280	21.4
290	25.1
300	29.1
310	33.5
Beyond 310	Refer drawing 1/3

Fin Curve

(L)	(T)
0	0.0
10	2.4
20	4.6
30	6.7
40	8.6
50	10.4
60	11.9
70	13.3
80	14.3
90	15.2
100	15.7
110	15.9
120	15.7
130	15.1
141	14.1
151	12.6
161	10.5
172	7.8
182	4.5
193	0.0

Note: All four fins are the same size.

Unit : mm

Wood Material : a Chinese quince laminated lumber (3.0cm thickness)

Driver : 2 inches throat driver (Pioneer TAD TD-4001 or JBL-2441, 2445)

Designed by Yuichi Arai (Refer to the March 1989 issue of MJ Magazine, Tokyo for detail.)