

Technical Manual

JBL

TECHNICAL

JBL AM6212/00-WH

SPECIFICATIONS

ACOUSTIC & ELECTRICAL SPECIFICATIONS:

- Nominal Impedance: 8 Ohms
- Power Capacity (AES): L.F. 800W (3200W Peak), 2 Hrs
600W (2400W Peak), 100 Hrs
H.F. 75 W (300W Peak), 2 Hrs
- Frequency Range: 40Hz - 19 kHz (-10dB)
- Sensitivity: L.F. 95dB SPL (1 Watt at 1 Meter)
H.F. 110dB SPL (1 Watt at 1 Meter)
Passive Mode 95dB
- Crossover Frequencies: HP & LP, 1.1 kHz

SYSTEM COMPONENTS:

- Cabinet: Enclosure (Not For Sale)
- Grille: 338163-007, 338163-107 (WH)
- Low Frequency Transducer: 2206HPL, 300mm (12 in.) VGCT™ Drivers
With 100mm (4 in.) Voice Coil
- DC Resistance: 5.3 ohm $\pm 10\%$ Aluminum Wire
- High Frequency Transducer: 2431H, 38mm (1.5 in.) Exit Compression
Driver 75mm (3 in.) Voice Coil

SYSTEM COMPONENTS: (CONT'D)

- DC Resistance: 4.4 ohm $\pm 10\%$
- Crossover Network: 339412-001

AURAL SWEEP TEST SPECIFICATIONS:

- A. System Aural Sweep Test: 10.0V Input, 20 Hz to 20 kHz
- B. L.F. Aural Sweep Test: 10.0V Input, 20 Hz to 1.2 kHz
- C. H.F. Aural Sweep Test: 2.83V Input, 550 Hz to 20 kHz

PHYSICAL SPECIFICATIONS:

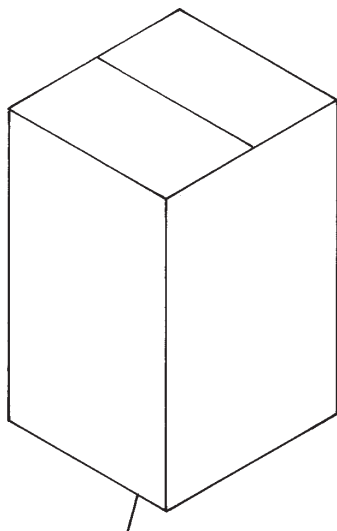
- Enclosure Dimensions: 713 x 371 x 460mm D
(28.1 x 14.6 x 18.1 in.D.)
- Net Weight: 58lb (26.3 kg.)

WARRANTY INFORMATION:

- Refer to Warranty Statement packed with each product.

PACKAGE

Warranty 59660
Installation Sheet
339390-015



Carton
352188-001

Filler (2)
352187-001

Micro Foam (8)
49790P

Logo Sticker, Grille Assy (Small)
339397-001

Sticker, JBL
337638-001

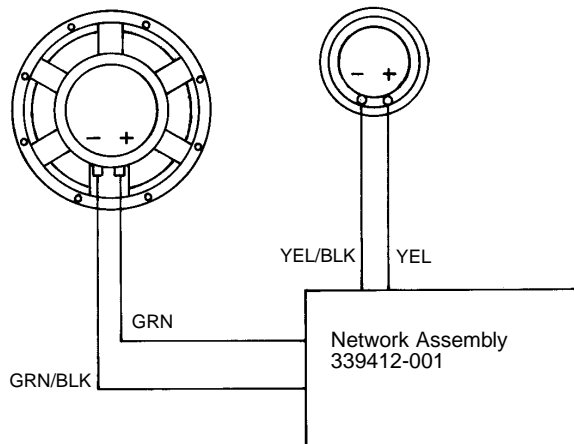
Hardware Kit,
229-00009-01

ACC, Not Included

WIRING DIAGRAM

Driver, Low Freq
2206HPL
Cone Repl
C8R2206

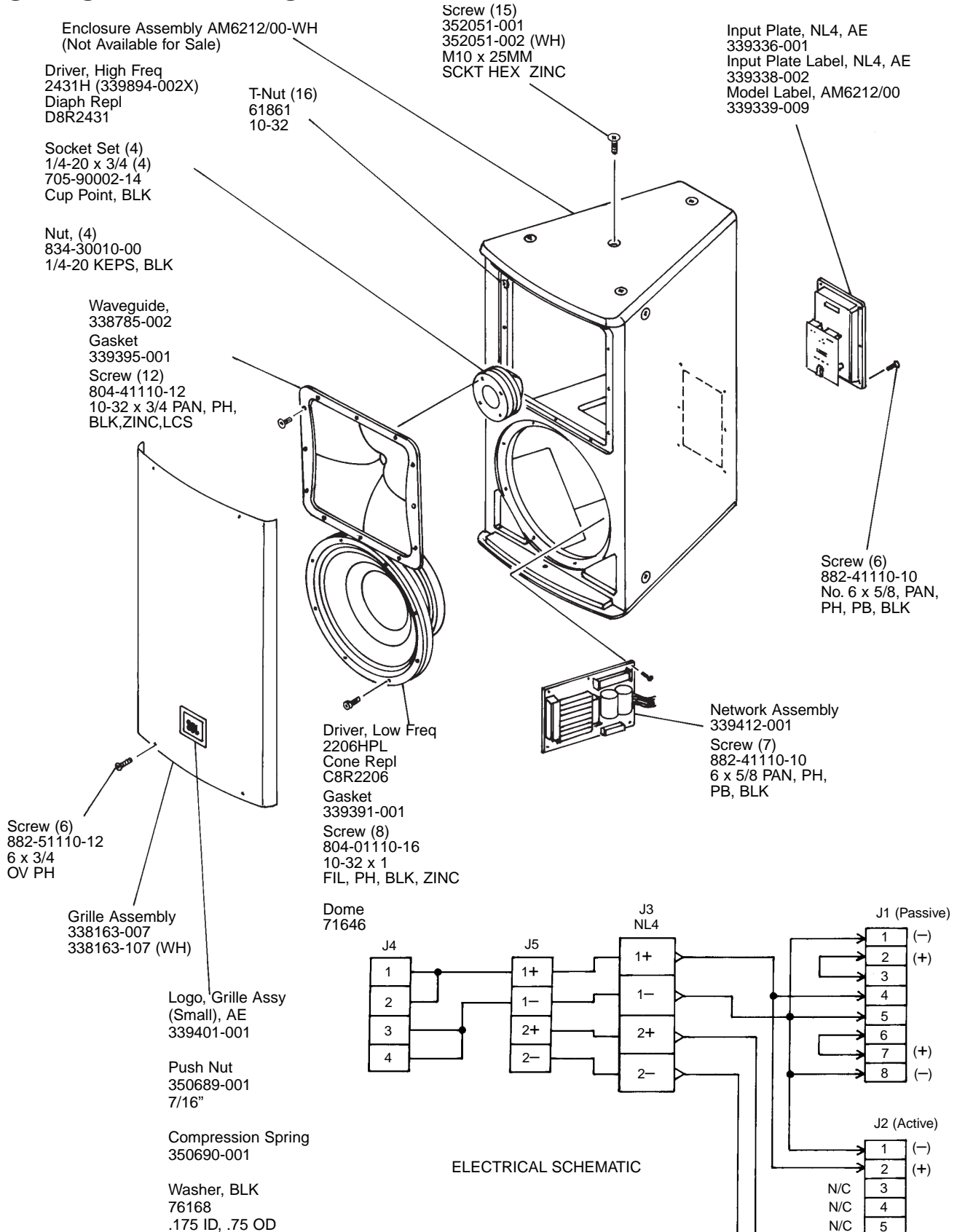
Driver, High Freq
2431H (339894-002X)
Diaph Repl
D8R2431



SEE NETWORK SCHEMATIC PAGE

JBL AM6212/00-WH

COMPONENT EXPLODED VIEW



NOTE: BLACK DURAFLEX REPAIR KIT 30052
WHITE DURAFLEX REPAIR KIT 16679

