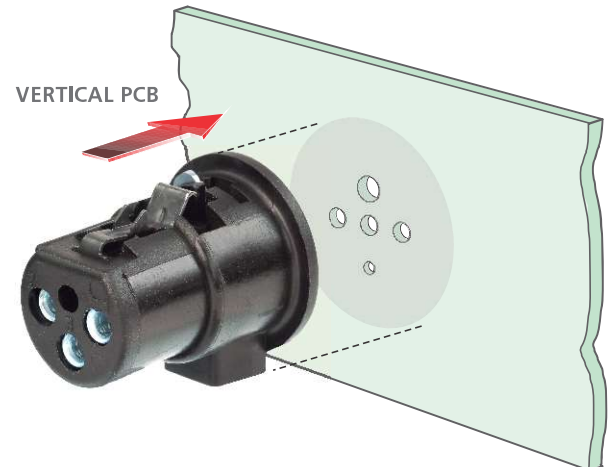
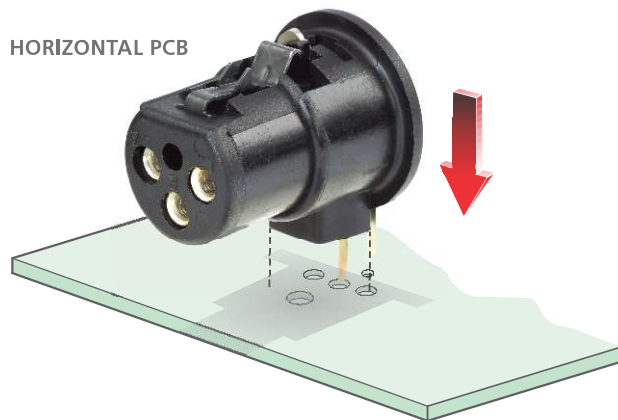




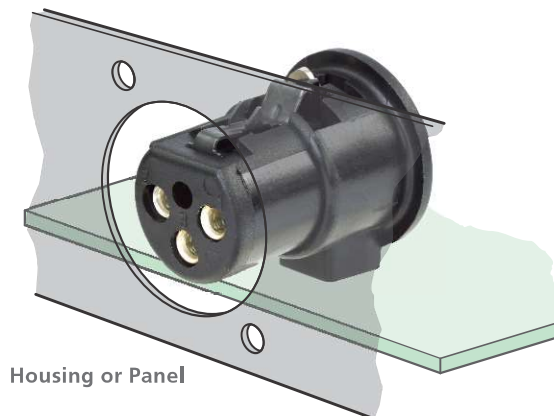
ASSEMBLY INSTRUCTION

D Series | XLR Chassis Connector

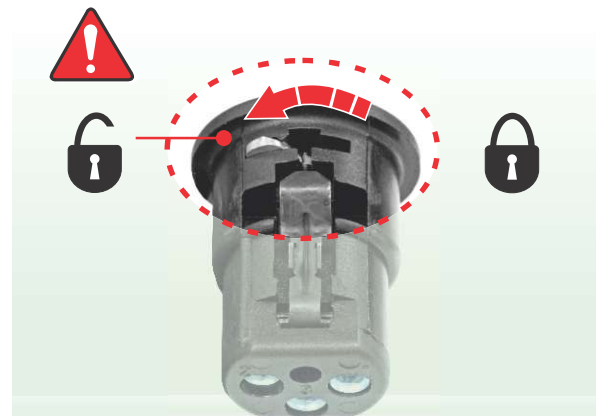
- Ⓐ Solder the INSERT to the horizontal or vertical PCB.



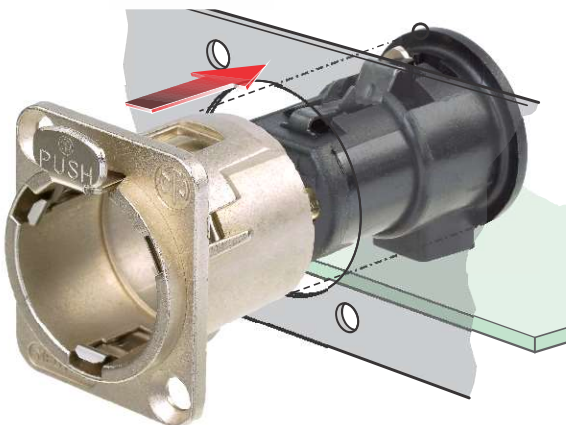
- Ⓑ Mount the PCB. Assemble into the housing.



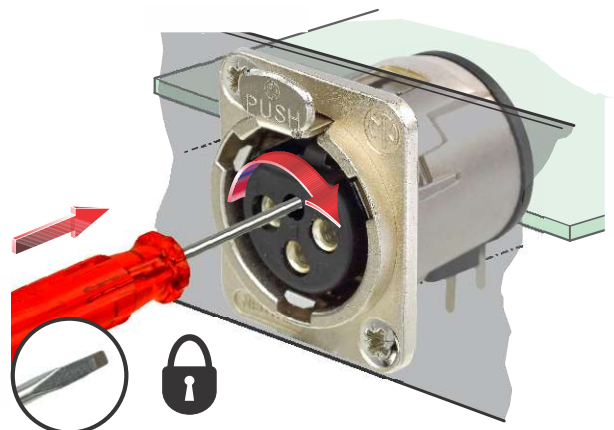
- Ⓒ Attention: Check the LOCK is open.



- Ⓓ Assemble the Neutrik D Serie metal housing.



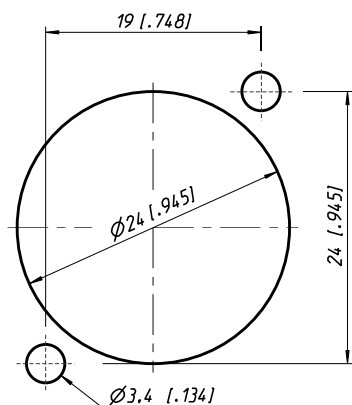
- Ⓔ LOCK the insert.



Join the insert and the housing and interlock by turning the latch 90° by using a flat head screw driver (size 00).

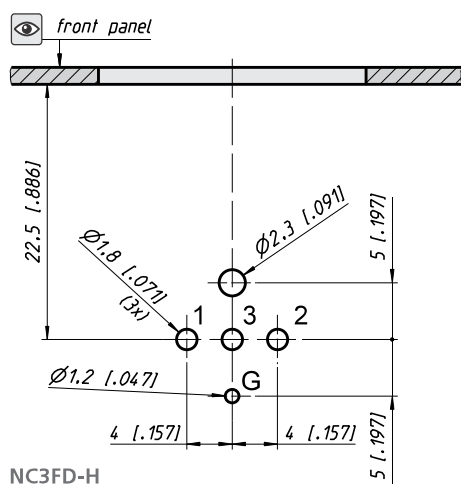


Panel cut out (rear side)

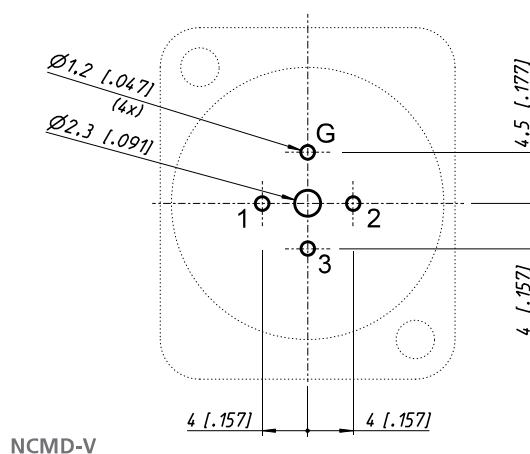
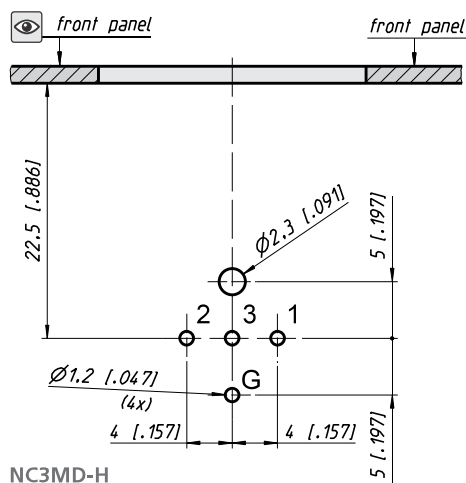
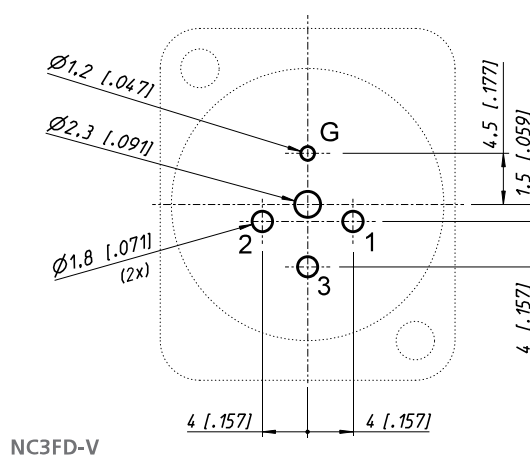


PCB layout (component side)

Horizontal



Vertical



NEUTRIK AG LI T: +423/237 24 24 F: +423/232 53 93
 NEUTRIK USA Inc. USA T: +1 704/972 3050 F: +1 704/438 9202
 NEUTRIK (UK) Ltd. UK T: +44 1983/811 441 F: +44 1983/811 439
 NEUTRIK Vertriebs GmbH DE/NL/AT/DK T: +49 8131/280 890 F: +49 8131/280 830

NEUTRIK France FR T: +33 1/4131 6750 F: +33 1/4131 0511
 NEUTRIK Tokyo Ltd. JP T: +81 3/3663 4733 F: +81 3/3663 4796
 NEUTRIK Hong Kong Ltd. HK T: +852/2687 6055 F: +852/2687 6052
 NEUTRIK India Pvt. Ltd. IND T: +91/982 05 43 424 F: +91/22 26163 540

Draft. Nr.: BDA 20 | Update: 29.09.2017 | Data subject to change without prior notice, ©2017 NEUTRIK®, ALL RIGHTS RESERVED, NEUTRIK® is a registered trademark.