

King of Tone mod

MG15DFXone

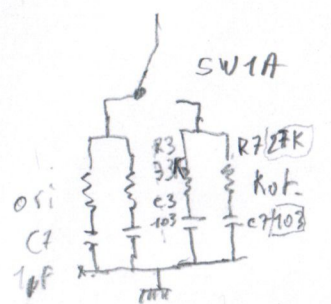
M.d.

OD Switch on "clean" position.

Depose R15, replacement par 1K
 C5 → replacement par 1M5
 R7) replacement Depose R1, jumper.
 R3) ~~100K~~ C1 → 100nF (473)
 C7) ~~100K~~ 100V C2 → 100nF
 100V

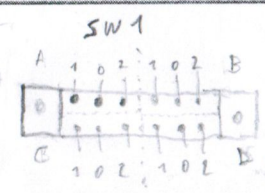
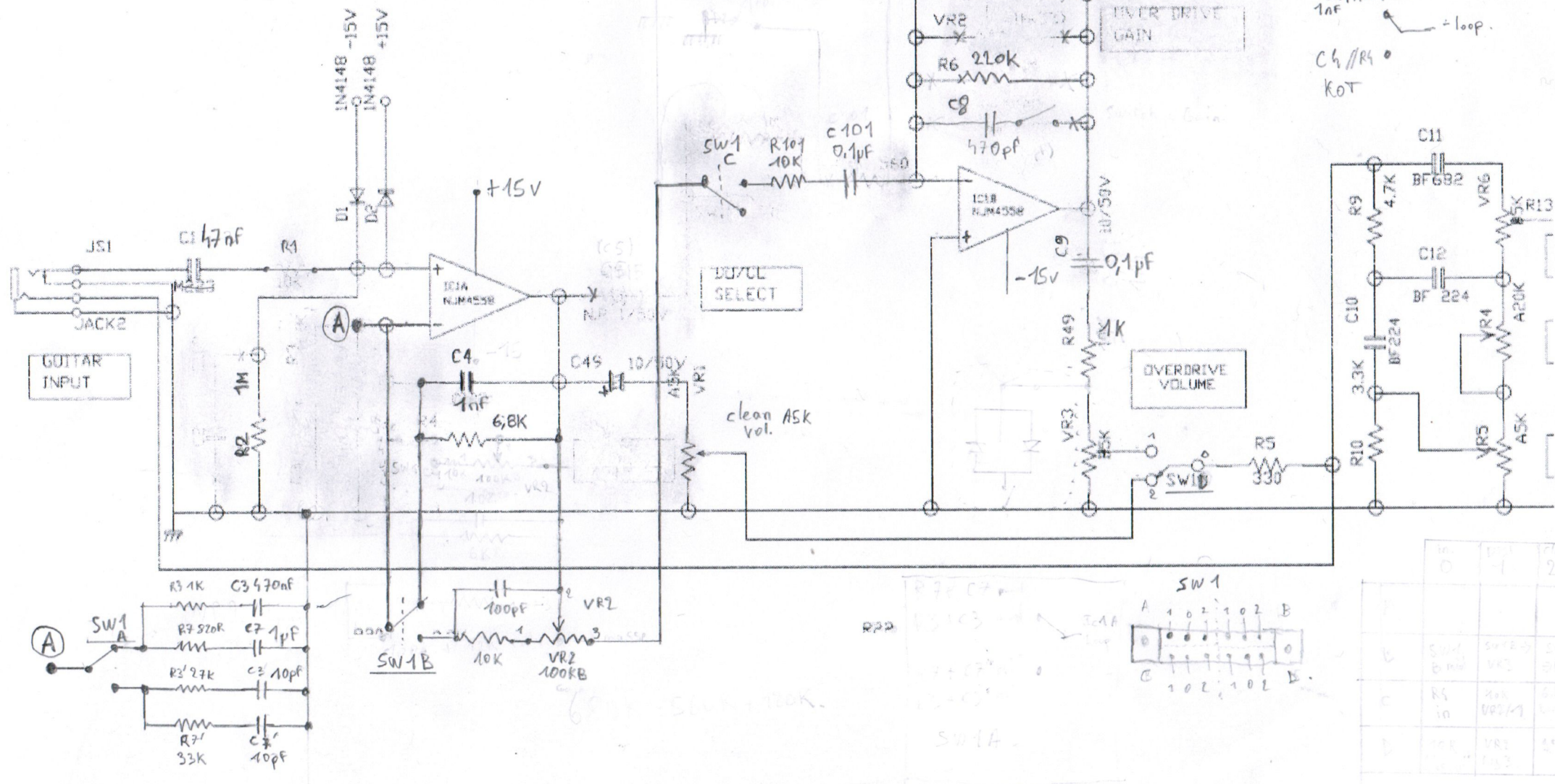
R1.

1N4148 x 4
 1N4003 →



SW 1C

C4 // R4 ori
 1nF
 C4 // R4
 Kot



	0	1	2
SW1	0	1	2
SW2	0	1	2
SW3	0	1	2
SW4	0	1	2
SW5	0	1	2
SW6	0	1	2
SW7	0	1	2
SW8	0	1	2
SW9	0	1	2
SW10	0	1	2