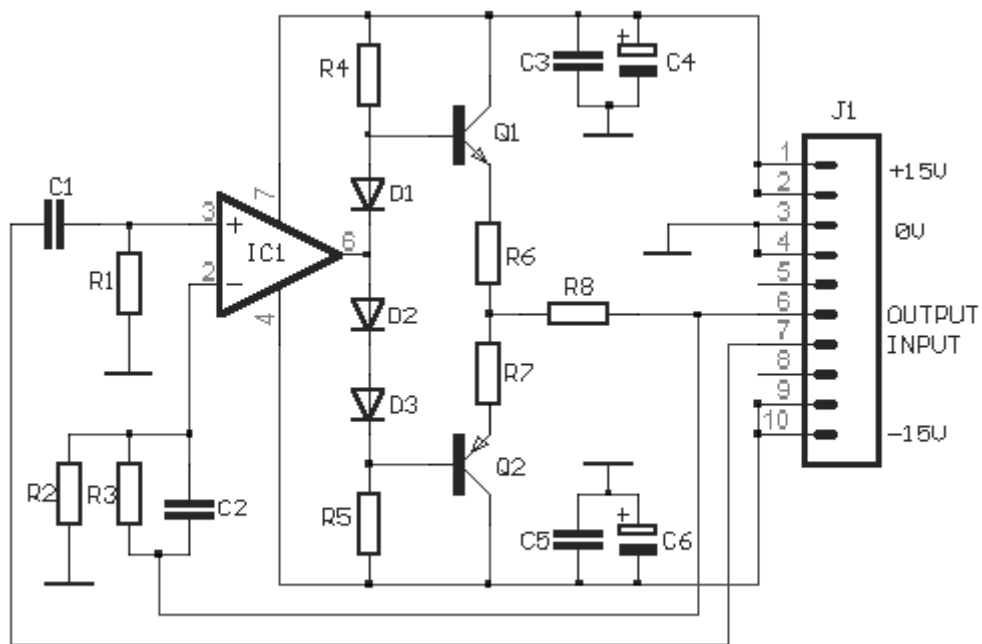


Modular Preamplifier with IC Class A



Preamplifier module in Class A with IC by Sam 6/01

An application, which is considered, of very good quality sound since the entrance transistors are working at Class A. The quality of sound depends to a large extent on IC1, which must be of good quality. It can be chosen from several IC with the best from the point of cost efficiency the proposed NE 5534 (NE 5532 for stereo construction) and the series TL071 (TL072) for greater input impedance. This particular application can be used with very good results and as driver headphone with higher 47R impedance. The amplification can be changed and adapted to the amount we want, if changing the feedback resistors R6/R7.

Part List

R1= 47Kohms	R8= 100 ohms	D1-2-3= 1N4148
R2= 1Kohms	C1= 1uF 100V MKT	IC1= TL071 - NE5534
R3= 5.6Kohms	C2= 100pF ceramic	Q1= BC550C
R4-5= 47Kohms	C3-5= 100nF 63V MKT	Q2= BC560C
R6-7= 10 ohms	C4-6= 47uF 25V	J1= 10 pin connector

Sam Electronic Circuits 8/01

[[Home](#)] [[My Database](#)] [[My Guestbook](#)]