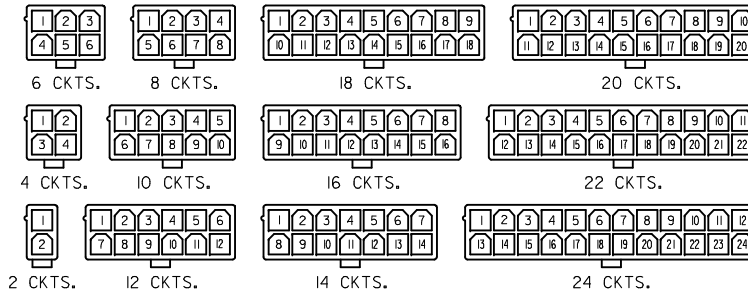
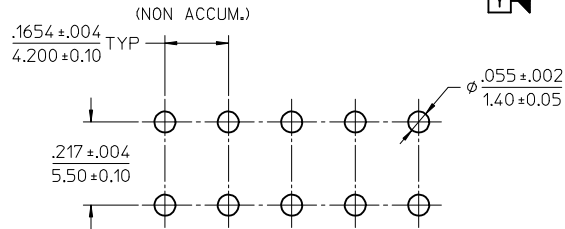
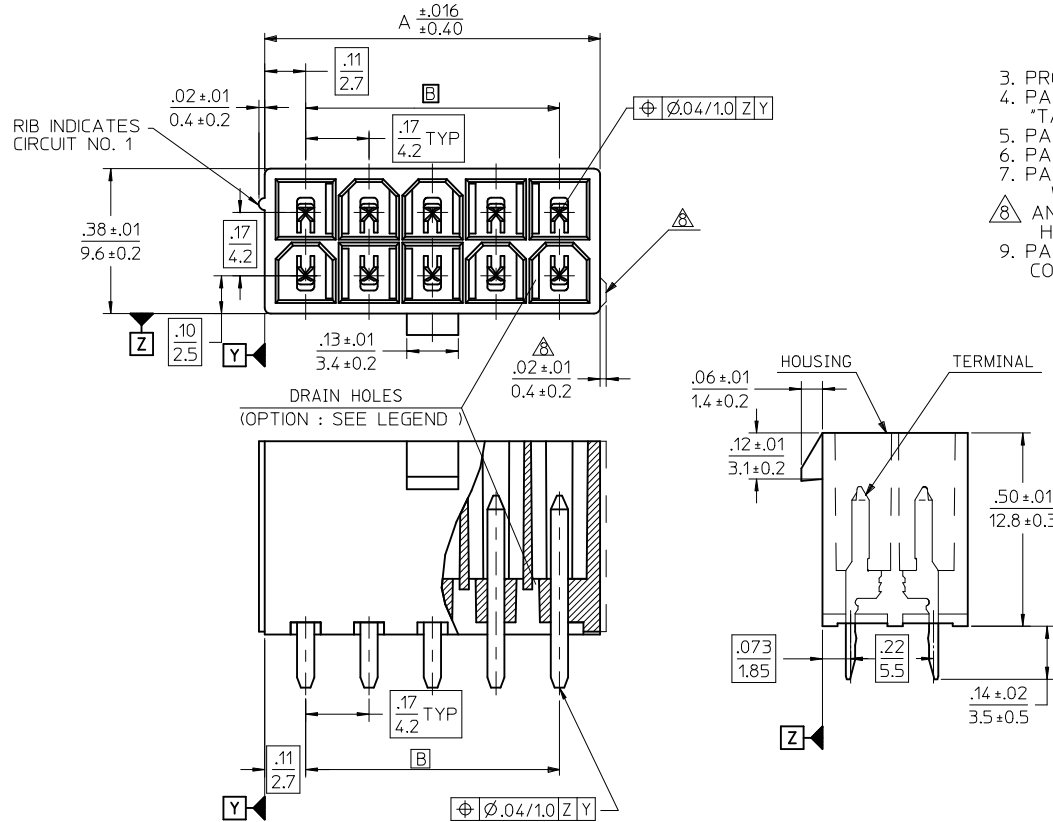


CIRCUIT SIZE	DIM. "A"	DIM. "B"
2	.21 (5.4)	—
4	.38 (9.6)	.17 (4.2)
6	.54 (13.8)	.33 (8.4)
8	.71 (18.0)	.50 (12.6)
10	.87 (22.2)	.66 (16.8)
12	1.04 (26.4)	.83 (21.0)
14	1.20 (30.6)	.99 (25.2)
16	1.37 (34.8)	1.16 (29.4)
18	1.54 (39.0)	1.32 (33.6)
20	1.70 (43.2)	1.49 (37.8)
22	1.87 (47.4)	1.65 (42.0)
24	2.03 (51.6)	1.82 (46.2)



CIRCUIT SIZE LAYOUT



RECOMMENDED HOLE LAYOUT FOR .070/(1.78) MAX. THICK P.C. BOARD VIEWED FROM COMPONENT SIDE

ADD P/N'S EC NO: UCP2014-2112 2013/11/13 DRAWN: NGUYEN 2013/11/13 CHKD: JELL 2013/11/27 APPR: FSMITH	DESCRIPTION REV	QUALITY SYMBOLS ▽=0 ▽=0 ▽=0	GENERAL TOLERANCES (UNLESS SPECIFIED) mm INCH 4 PLACES ± --- ± --- 3 PLACES ± --- ± .005 2 PLACES ± .13 ± .010 1 PLACE ± .25 ± --- ANGULAR ± 3 °	DIMENSION STYLE IN/MM DRAWN BY DATE H. HIRAMOTO '89/04/03 CHECKED BY DATE M. FUKUSHIMA '94/04/20 APPROVED BY DATE F. SMITH 2012/05/04	SCALE 4:1 DESIGN UNITS METRIC THIRD ANGLE PROJECTION	MINI FIT JR VERTICAL HEADER ASSEMBLIES WITHOUT PEGS MOLEX INCORPORATED SD-5566-002 1 OF 5

- NOTES:
- MATERIALS:
HOUSING:
"BLANK" = NYLON 6/6, UL94V-2, COLOR: NATURAL
"210" = NYLON 6/6, UL94V-0, COLOR: NATURAL
"400" = NYLON 6/6, UL94V-0, COLOR: BLACK
TERMINALS:
"BLANK" = BRASS
"PB" = PHOSPHOR BRONZE
2. TERMINAL PLATING:
"BLANK" = BRIGHT TIN 0.00035/(0.00090) MIN. OVER COPPER .000020/(0.00050) MIN. (BRASS)
TIN .000035/(0.00090) MIN. REFLOW TREATMENT OR BRIGHT TIN .000035/(0.00090) MIN. (PHOSPHOR BRONZE)
"S" = .000100/(0.00254) MIN. BRIGHT TIN OVER .000050/(0.00127) MIN NICKEL
"GS2" = .000015/(0.00038) MIN. SELECT GOLD AND .000100/(0.00254) MIN. SELECT MATTE TIN OVER .000050/(0.00127) MIN. NICKEL OVERALL
"GS" = .000030/(0.00076) MIN. SELECT GOLD AND .000100/(0.00254) MIN. SELECT MATTE TIN OVER .000050/(0.00127) MIN. NICKEL OVERALL
3. PRODUCT SPECIFICATION: PS-5556-001
4. PACKAGING: "BLANK" = BULK PACKED, "TA" = TRAY PACK PER PK-5566-001, "TR" = TRAY PACK PER PK-5566
5. PART MATES WITH MINI-FIT JR. RECEPTACLE NO. 5557.
6. PART IS NOT DESIGNED FOR CURRENT SHARING.
7. PARTS ARE NOT DESIGNED TO BE MATED OR UN-MATED WHILE CIRCUITS ARE LIVE.
8. ANTI-SHINGLING RIB MAY OR MAY NOT APPEAR ON HOUSINGS.
9. PART CONFORMS TO CLASS "B" REQUIREMENTS OF COSMETIC SPECIFICATION PS-45499-002.

A

PARTS WITH OUT DRAIN HOLES

ib_frame_C_P_AM_T Rev. F 2009/06/18	12	11	10	9	8	7	6	5	4	3	2	1
--	----	----	----	---	---	---	---	---	---	---	---	---

	13	12	11	10	9	8	7	6	5	4	3	2	1	
J	39-30-9247	5566-24BGS2-2 IO	39-31-0248	5566-24BGS-2 IO	39-31-0242	5566-24BS-2 IO	39-31-0240	5566-24B-2 IO	39-30-6244	5566-24APBS-2 IO	24			
	▲ -9227	▲ -22BGS2-2 IO	▲ -0228	▲ -22BGS-2 IO	▲ -0222	▲ -22BS-2 IO	▲ -0220	▲ -22B-2 IO	▲ -6224	▲ -22APBS-2 IO	22			
	-9207	-20BGS2-2 IO	-0208	-20BGS-2 IO	-0202	-20BS-2 IO	-0200	-20B-2 IO	-6204	-20APBS-2 IO	20			
	-9187	-18BGS2-2 IO	-0188	-18BGS-2 IO	-0182	-18BS-2 IO	-0180	-18B-2 IO	-6184	-18APBS-2 IO	18			
	-9167	-16BGS2-2 IO	-0168	-16BGS-2 IO	-0162	-16BS-2 IO	-0160	-16B-2 IO	-6164	-16APBS-2 IO	16			
	-9147	-14BGS2-2 IO	-0148	-14BGS-2 IO	-0142	-14BS-2 IO	-0140	-14B-2 IO	-6144	-14APBS-2 IO	14			
	-9127	-12BGS2-2 IO	-0128	-12BGS-2 IO	-0122	-12BS-2 IO	-0120	-12B-2 IO	-6124	-12APBS-2 IO	12			
	-9107	-10BGS2-2 IO	-0108	-10BGS-2 IO	-0102	-10BS-2 IO	-0100	-10B-2 IO	-6104	-10APBS-2 IO	10			
	-9087	-08BGS2-2 IO	-0088	-08BGS-2 IO	-0082	-08BS-2 IO	-0080	-08B-2 IO	-6084	-08APBS-2 IO	8			
	-9067	-06BGS2-2 IO	-0068	-06BGS-2 IO	-0062	-06BS-2 IO	-0060	-06B-2 IO	-6064	-06APBS-2 IO	6			
▼ -9047	▼ -04BGS2-2 IO	▼ -0048	▼ -04BGS-2 IO	▼ -0042	▼ -04BS-2 IO	▼ -0040	▼ -04B-2 IO	▼ -6044	▼ -04APBS-2 IO	4				
39-30-9027	5566-02BGS2-2 IO	39-31-0028	5566-02BGS-2 IO	39-31-0022	5566-02BS-2 IO	39-31-0020	5566-02B-2 IO	39-30-6024	5566-02APBS-2 IO	2				
H	EDP NO.	ENG. NO.	EDP NO.	ENG. NO.	EDP NO.	ENG. NO.	EDP NO.	ENG. NO.	EDP NO.	ENG. NO.				
	5566-NBGS2-2 IO	5566-NBGS-2 IO	5566-NBS-2 IO	5566-NB-2 IO	5566-NAPBS-2 IO	CKT. SIZE								
	39-30-9246	5566-24BGS2	39-31-0247	5566-24BGS	39-31-0241	5566-24BS	39-29-3246	5566-24B	39-30-6243	5566-24APBS	24			
	▲ -9226	▲ -22BGS2	▲ -0227	▲ -22BGS	▲ -0221	▲ -22BS	▲ -3226	▲ -22B	▲ -6223	▲ -22APBS	22			
	-9206	-20BGS2	-0207	-20BGS	-0201	-20BS	-3206	-20B	-6203	-20APBS	20			
	-9186	-18BGS2	-0187	-18BGS	-0181	-18BS	-3186	-18B	-6183	-18APBS	18			
	-9166	-16BGS2		-16BGS	-0161	-16BS	-3166	-16B	-6163	-16APBS	16			
	-9146	-14BGS2	-0147	-14BGS	-0141	-14BS	-3146	-14B	-6143	-14APBS	14			
	-9126	-12BGS2	-0127	-12BGS	-0121	-12BS	-3126	-12B	-6123	-12APBS	12			
	-9106	-10BGS2	-0107	-10BGS	-0101	-10BS	-3106	-10B	-6103	-10APBS	10			
G	-9086	-08BGS2	-0087	-08BGS	-0081	-08BS	-3086	-08B	-6083	-08APBS	8			
	-9066	-06BGS2	-0067	-06BGS	-0061	-06BS	-3066	-06B	-6063	-06APBS	6			
	▼ -9046	▼ -04BGS2	▼ -0047	▼ -04BGS	▼ -0041	▼ -04BS	▼ -3046	▼ -04B	▼ -6043	▼ -04APBS	4			
	39-30-9026	5566-02BGS2	39-31-0027	5566-02BGS	39-31-0021	5566-02BS	39-29-3026	5566-02B	39-30-6023	5566-02APBS	2			
	EDP NO.	ENG. NO.	EDP NO.	ENG. NO.	EDP NO.	ENG. NO.	EDP NO.	ENG. NO.	EDP NO.	ENG. NO.				
	5566-NBGS2	5566-NBGS	5566-NBS	5566-NB	5566-NAPBS	CKT. SIZE								
	39-31-0245	5566-24BPBS	39-31-0243	5566-24BPB	39-31-0246	5566-24BPBS-2 IO	39-31-0244	5566-24BPB-2 IO	24					
	▲ -0225	▲ -22BPBS	▲ -0223	▲ -22BPB	▲ -0226	▲ -22BPBS-2 IO	▲ -0224	▲ -22BPB-2 IO	22					
	-0205	-20BPBS	-0203	-20BPB	-0206	-20BPBS-2 IO	-0204	-20BPB-2 IO	20					
	-0185	-18BPBS	-0183	-18BPB	-0186	-18BPBS-2 IO	-0184	-18BPB-2 IO	18					
E	-0165	-16BPBS	-0163	-16BPB	-0166	-16BPBS-2 IO	-0164	-16BPB-2 IO	16					
	-0145	-14BPBS	-0143	-14BPB	-0146	-14BPBS-2 IO	-0144	-14BPB-2 IO	14					
	-0125	-12BPBS	-0123	-12BPB	-0126	-12BPBS-2 IO	-0124	-12BPB-2 IO	12					
	-0105	-10BPBS	-0103	-10BPB	-0106	-10BPBS-2 IO	-0104	-10BPB-2 IO	10					
	-0085	-08BPBS	-0083	-08BPB	-0086	-08BPBS-2 IO	-0084	-08BPB-2 IO	8					
	-0065	-06BPBS	-0063	-06BPB	-0066	-06BPBS-2 IO	-0064	-06BPB-2 IO	6					
	▼ -0045	▼ -04BPBS	▼ -0043	▼ -04BPB	▼ -0046	▼ -04BPBS-2 IO	▼ -0044	▼ -04BPB-2 IO	4					
	39-31-0025	5566-02BPBS	39-31-0023	5566-02BPB	39-31-0026	5566-02BPBS-2 IO	39-31-0024	5566-02BPB-2 IO	2					
	EDP NO.	ENG. NO	EDP NO.	ENG. NO	EDP NO.	ENG. NO	EDP NO.	ENG. NO	EDP NO.	ENG. NO				
	5566-NBPBS	5566-NBPB	5566-NBPBS-2 IO	5566-NBPB-2 IO	CKT. SIZE									
D	39-31-0245	5566-24BPBS	39-31-0243	5566-24BPB	39-31-0246	5566-24BPBS-2 IO	39-31-0244	5566-24BPB-2 IO	24					
	▲ -0225	▲ -22BPBS	▲ -0223	▲ -22BPB	▲ -0226	▲ -22BPBS-2 IO	▲ -0224	▲ -22BPB-2 IO	22					
	-0205	-20BPBS	-0203	-20BPB	-0206	-20BPBS-2 IO	-0204	-20BPB-2 IO	20					
	-0185	-18BPBS	-0183	-18BPB	-0186	-18BPBS-2 IO	-0184	-18BPB-2 IO	18					
	-0165	-16BPBS	-0163	-16BPB	-0166	-16BPBS-2 IO	-0164	-16BPB-2 IO	16					
	-0145	-14BPBS	-0143	-14BPB	-0146	-14BPBS-2 IO	-0144	-14BPB-2 IO	14					
	-0125	-12BPBS	-0123	-12BPB	-0126	-12BPBS-2 IO	-0124	-12BPB-2 IO	12					
	-0105	-10BPBS	-0103	-10BPB	-0106	-10BPBS-2 IO	-0104	-10BPB-2 IO	10					
	-0085	-08BPBS	-0083	-08BPB	-0086	-08BPBS-2 IO	-0084	-08BPB-2 IO	8					
	-0065	-06BPBS	-0063	-06BPB	-0066	-06BPBS-2 IO	-0064	-06BPB-2 IO	6					
C	▼ -0045	▼ -04BPBS	▼ -0043	▼ -04BPB	▼ -0046	▼ -04BPBS-2 IO	▼ -0044	▼ -04BPB-2 IO	4					
	39-31-0025	5566-02BPBS	39-31-0023	5566-02BPB	39-31-0026	5566-02BPBS-2 IO	39-31-0024	5566-02BPB-2 IO	2					
	EDP NO.	ENG. NO	EDP NO.	ENG. NO	EDP NO.	ENG. NO	EDP NO.	ENG. NO	EDP NO.	ENG. NO				
	5566-NBPBS	5566-NBPB	5566-NBPBS-2 IO	5566-NBPB-2 IO	CKT. SIZE									
	39-31-0245	5566-24BPBS	39-31-0243	5566-24BPB	39-31-0246	5566-24BPBS-2 IO	39-31-0244	5566-24BPB-2 IO	24					
	▲ -0225	▲ -22BPBS	▲ -0223	▲ -22BPB	▲ -0226	▲ -22BPBS-2 IO	▲ -0224	▲ -22BPB-2 IO	22					
	-0205	-20BPBS	-0203	-20BPB	-0206	-20BPBS-2 IO	-0204	-20BPB-2 IO	20					
	-0185	-18BPBS	-0183	-18BPB	-0186	-18BPBS-2 IO	-0184	-18BPB-2 IO	18					
	-0165	-16BPBS	-0163	-16BPB	-0166	-16BPBS-2 IO	-0164	-16BPB-2 IO	16					
	-0145	-14BPBS	-0143	-14BPB	-0146	-14BPBS-2 IO	-0144	-14BPB-2 IO	14					
B	-0125	-12BPBS	-0123	-12BPB	-0126	-12BPBS-2 IO	-0124	-12BPB-2 IO	12					
	-0105	-10BPBS	-0103	-10BPB	-0106	-10BPBS-2 IO	-0104	-10BPB-2 IO	10					
	-0085	-08BPBS	-0083	-08BPB	-0086	-08BPBS-2 IO	-0084	-08BPB-2 IO	8					
	-0065	-06BPBS	-0063	-06BPB	-0066	-06BPBS-2 IO	-0064	-06BPB-2 IO	6					
	▼ -0045	▼ -04BPBS	▼ -0043	▼ -04BPB	▼ -0046	▼ -04BPBS-2 IO	▼ -0044	▼ -04BPB-2 IO	4					
	39-31-0025	5566-02BPBS	39-31-0023	5566-02BPB	39-31-0026	5566-02BPBS-2 IO	39-31-0024	5566-02BPB-2 IO	2					
	EDP NO.	ENG. NO	EDP NO.	ENG. NO	EDP NO.	ENG. NO	EDP NO.	ENG. NO	EDP NO.	ENG. NO				
	5566-NBPBS	5566-NBPB	5566-NBPBS-2 IO	5566-NBPB-2 IO	CKT. SIZE									
	39-31-0245	5566-24BPBS	39-31-0243	5566-24BPB	39-31-0246	5566-24BPBS-2 IO	39-31-0244	5566-24BPB-2 IO	24					
	▲ -0225	▲ -22BPBS	▲ -0223	▲ -22BPB	▲ -0226	▲ -22BPBS-2 IO	▲ -0224	▲ -22BPB-2 IO	22					
A	-0205	-20BPBS	-0203	-20BPB	-0206	-20BPBS-2 IO	-0204	-20BPB-2 IO	20					
	-0185	-18BPBS	-0183	-18BPB	-0186	-18BPBS-2 IO	-0184	-18BPB-2 IO	18					
	-0165	-16BPBS	-0163	-16BPB	-0166	-16BPBS-2 IO	-0164	-16BPB-2 IO	16					
	-0145	-14BPBS	-0143	-14BPB	-0146	-14BPBS-2 IO	-0144	-14BPB-2 IO	14					
	-0125	-12BPBS	-0123	-12BPB	-0126	-12BPBS-2 IO	-0124	-12BPB-2 IO	12					
	-0105	-10BPBS	-0103	-10BPB	-0106	-10BPBS-2 IO	-0104	-10BPB-2 IO	10					
	-0085	-08BPBS	-0083	-08BPB	-0086	-08BPBS-2 IO	-0084	-08BPB-2 IO	8					
	-0065	-06BPBS	-0063	-06BPB	-0066	-06BPBS-2 IO	-0064	-06BPB-2 IO	6					
	▼ -0045	▼ -04BPBS	▼ -0043	▼ -04BPB</										

TRAY PACKED PART NUMBERS

PARTS WITHOUT DRAIN HOLES					39-53-9249	5566-24A-210-TA	39-53-9248	5566-24A-210-TA	24
						▲ -22A-210-TA	▲ -9228	▲ -22A-TA	22
						-20A-210-TA	-9208	-20A-TA	20
			39-34-1180	5566-18A-210-TR		-18A-210-TA	-9188	-18A-TA	18
						-16A-210-TA	-9168	-16A-TA	16
						-14A-210-TA	-9148	-14A-TA	14
						-12A-210-TA	-9128	-12A-TA	12
						-10A-210-TA	-9108	-10A-TA	10
						-08A-210-TA	-9088	-08A-TA	8
	46999-0630	5566-06AGS2-BL-TA				▼ -06A-210-TA	▼ -9068	▼ -06A-TA	6
	46999-0629	5566-04AGS2-BL-TA				▼ -04A-210-TA	▼ -9048	▼ -04A-TA	4
						5566-02A-210-TA	39-53-9028	5566-02A-TA	2
	EDP NO.	ENG. NO.	EDP NO.	ENG. NO.	EDP NO.	ENG. NO.	EDP NO.	ENG. NO.	CKT. SIZE
5566-NAGS2-BL-TA		5566-NA-210-TR		5566-NA-210-TA		5566-NA-TA			

SEE SHEET 1 EC NO: UCP2014-2112 DRAWN:NGUYEN CHKD:JELL APPR:FSMITH 2013/11/13 2013/11/13 2013/11/27	DESCRIPTION	QUALITY SYMBOLS <div></div> <div></div> <div></div>	GENERAL TOLERANCES (UNLESS SPECIFIED) <table><tr><td></td><td>mm</td><td>INCH</td></tr><tr><td>4 PLACES</td><td>±---</td><td>±---</td></tr><tr><td>3 PLACES</td><td>±---</td><td>±.005</td></tr><tr><td>2 PLACES</td><td>±.13</td><td>±.010</td></tr><tr><td>1 PLACE</td><td>±.25</td><td>±---</td></tr></table>		mm	INCH	4 PLACES	±---	±---	3 PLACES	±---	±.005	2 PLACES	±.13	±.010	1 PLACE	±.25	±---	DIMENSION STYLE IN/MM <table><tr><td>DRAWN BY</td><td>DATE</td></tr><tr><td>H.HIRAMOTO</td><td>'89/04/03</td></tr><tr><td>CHECKED BY</td><td>DATE</td></tr><tr><td>M.FUKUSHIMA</td><td>'94/04/20</td></tr><tr><td>APPROVED BY</td><td>DATE</td></tr><tr><td>FSMITH</td><td>2012/05/04</td></tr></table>	DRAWN BY	DATE	H.HIRAMOTO	'89/04/03	CHECKED BY	DATE	M.FUKUSHIMA	'94/04/20	APPROVED BY	DATE	FSMITH	2012/05/04	SCALE 1:1	DESIGN UNITS METRIC	<div></div> THIRD ANGLE PROJECTION
					mm	INCH																												
				4 PLACES	±---	±---																												
				3 PLACES	±---	±.005																												
				2 PLACES	±.13	±.010																												
				1 PLACE	±.25	±---																												
				DRAWN BY	DATE																													
				H.HIRAMOTO	'89/04/03																													
				CHECKED BY	DATE																													
				M.FUKUSHIMA	'94/04/20																													
APPROVED BY	DATE																																	
FSMITH	2012/05/04																																	
TITLE MINI FIT JR VERTICAL HEADER ASSEMBLIES WITHOUT PEGS																																		
<div></div> MOLEX INCORPORATED																																		
MATERIAL NO.																																		
DOCUMENT NO.																																		
SHEET NO.																																		
5 OF 5																																		
SD-5566-002																																		
SEE TABLE																																		
SIZE C																																		

THIS DRAWING CONTAINS INFORMATION THAT IS PROPRIETARY TO MOLEX INCORPORATED AND SHOULD NOT BE USED WITHOUT WRITTEN PERMISSION