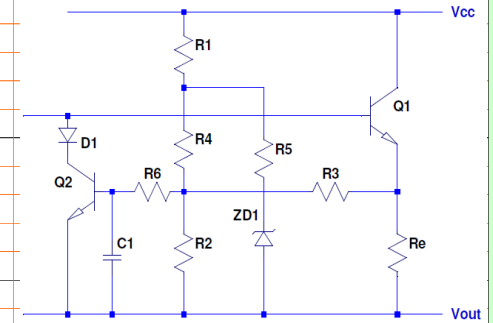
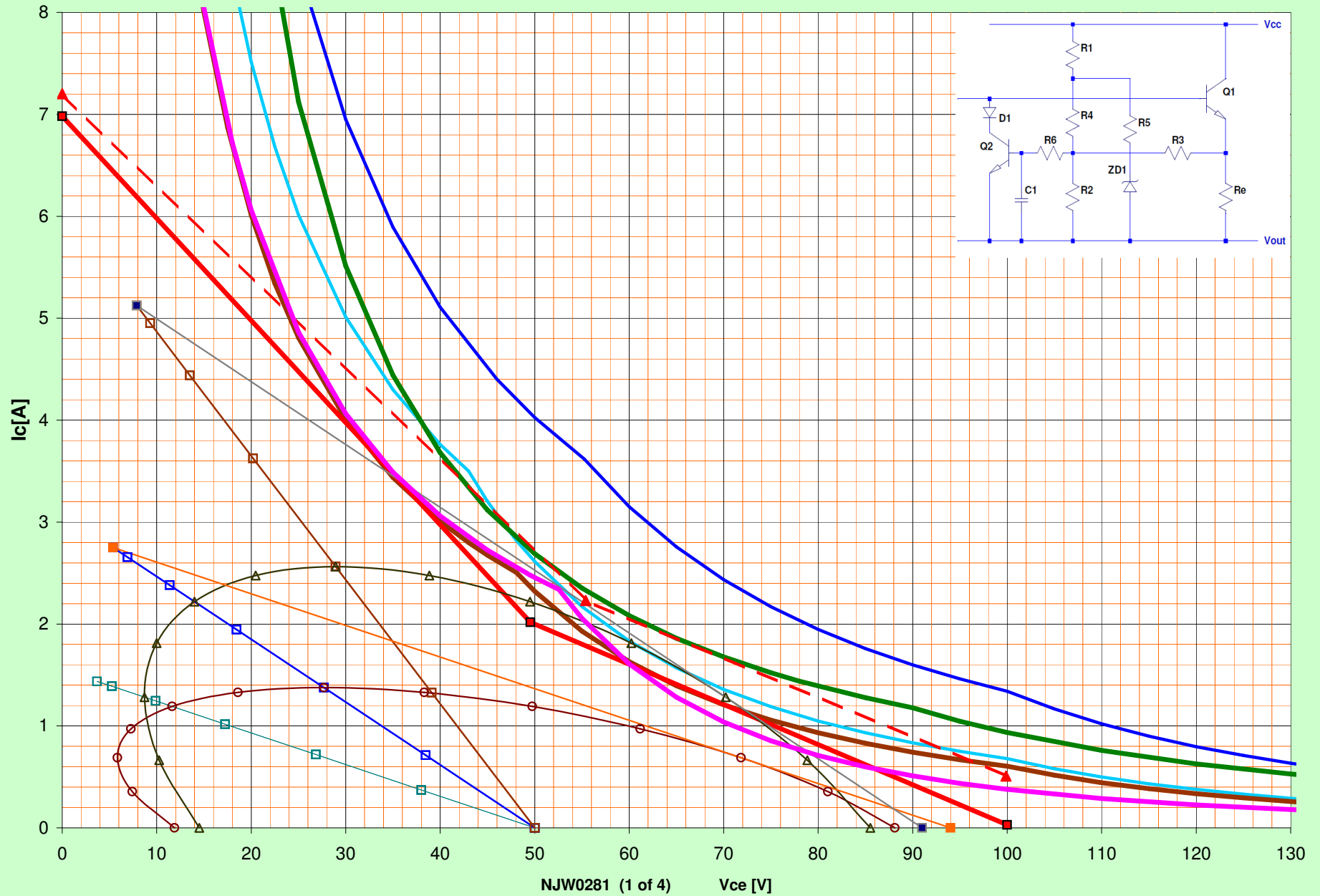


Ref: Michael Kiwanuka "SOA Protection of Linear Power Amplifiers"_Fig 28
Ref: David Eather "A Practical Approach to Amplifier Output Stage Design"
Ref "APEX Microtechnology AN22 SOA and Load Lines"



- DC Ic @ Tc 25 DC Ic @ Tc50 100ms Ic@Tc 50 Fig28 Dual Slope Protect

 8.00 Ω < 0 4.00 Ω < 0 2.00 Ω < 0 8.00 Ω < 60

 4.00 Ω < 60 4 \pm jX Boundary 2 \pm jX Boundary MJL3281 1s Ic @ Tc50

 MJL3281 VI protect 2SC5200 DC@Tc50