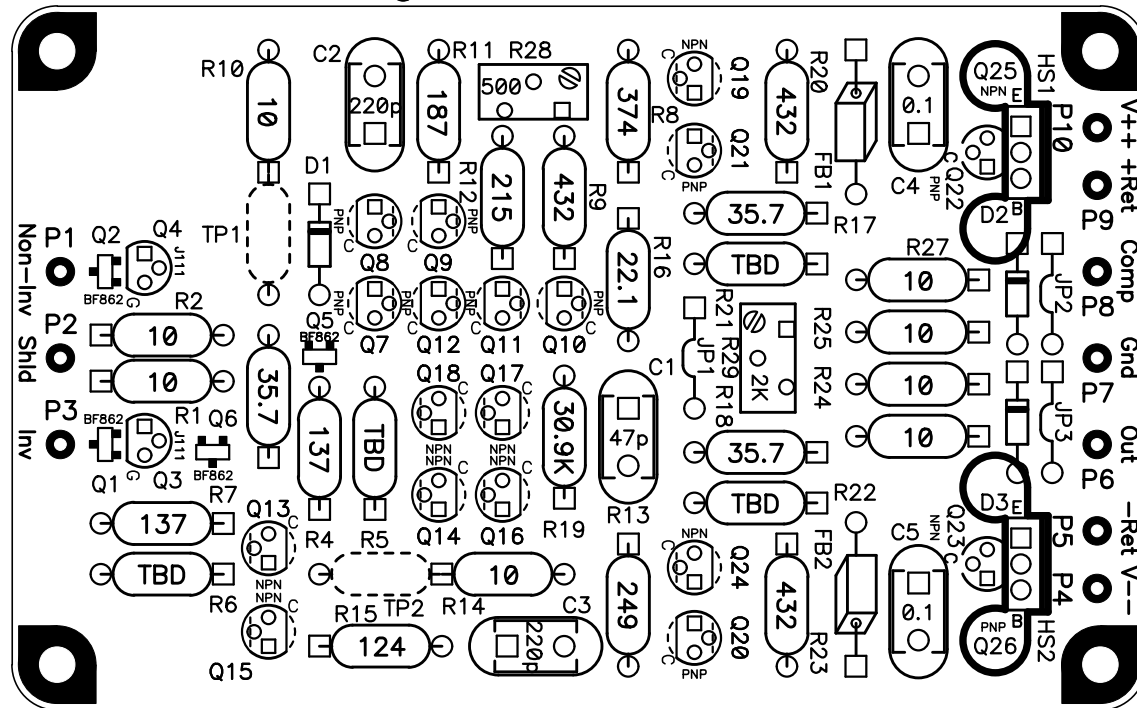
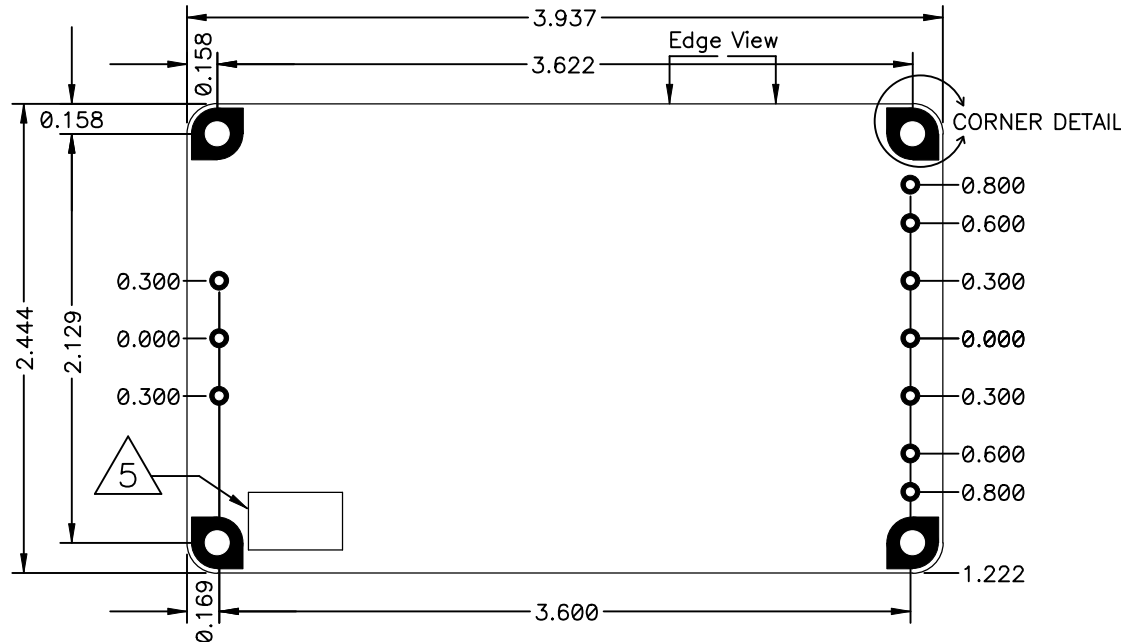
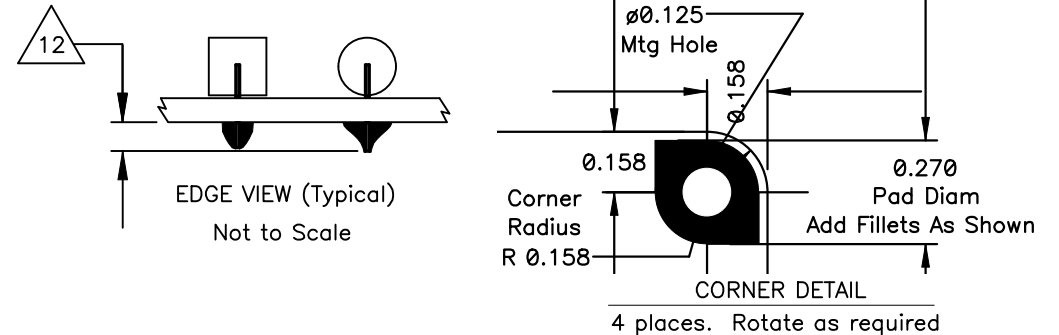


DIY AUDIO DISCRETE OPAMP
SWOPA Disc Opamp THD1
PWB DWG SWOPA2885PWB1 REV B



COMPONENT PLACEMENT

Solid transistor outlines for EBC pinout; dashed outlines for CBE pinout.
Component values shown for ref only. See Parts List for correct values.



NOTES: UNLESS OTHERWISE SPECIFIED

- ALL MATERIALS ARE TO BE ROHS COMPLIANT. FABRICATE PER ANSI/IPC-A-600, IPC-QE-605, IPC-4101, IPC-4552 AND IPC-SM-840 SPECIFICATIONS.
- MATERIAL: BASE MATERIAL LAMINATED EPOXY GLASS (COLOR GREEN) .056 THK (.062 MAX) ROHS COMPLIANT FR-4 PER IPC-4101 SLASH SHEETS #26 OR #83 OR #98 WITH MINIMUM Tg 170 DEGREE C OR HIGHER, Td 340 DEGREE C OR HIGHER AND FLAME RATED UL 94V-0.
- SOLDERMASK BOTH SIDES OF BOARD OVER BARE COPPER WITH ROHS COMPLIANT MATERIAL PER ANSI/IPC-SM-840, COLOR SHALL BE GREEN.
- APPLY FINISH OR PLATING TO EXPOSED COPPER, BOTH SIDES AS SPECIFIED IN PURCHASE DOCUMENTS.
- INDICATED AREA ON BOTTOM SIDE AVAILABLE FOR APPLICATION OF PCB MANUFACTURE LOGO, UL MARKING, DATE-CODE AND ROHS COMPLIANT SYMBOL. USE OF OTHER LOCATION TO BE APPROVED BY PURCHASER.
- APPLY SILKSCREEN TO COMPONENT SIDE OF BOARD USING NON-CONDUCTIVE ROHS COMPLIANT WHITE EPOXY INK.
- SEE ARTWORK WITH SAME DRAWING NUMBER AND REVISION AS THIS DRAWING.
- HOLE LOCATIONS SPECIFIED IN SEPARATE DRILL FILE TAKE PRECEDENCE OVER THIS DWG AND ARTWORK. DIMENSIONS ON DWG TAKE PRECEDENCE OVER ARTWORK. TOLERANCE ARE: .XX=+/- .01; .XXX=+/- .005; ANGLES=2 DEG
- SEE SEPARATE DRILL FILE FOR HOLE LOCATIONS. SELECTED HOLE LOCATIONS SHOWN ON THIS DWG FOR REF ONLY.
- HOLE SIZES ARE SPECIFIED AS FINAL DIMENSIONS AFTER PLATING AND FINISHING. UNLESS OTHERWISE SPECIFIED ALL HOLES TO BE PLATED.
- HOLE PLATING TO BE AS SPECIFIED IN PURCHASE DOCUMENTS.
- TRIM SOLDER FILLETS AND COMPONENT LEADS TO 0.100" (MAX) BEYOND BOARD SURFACE ON BACK SIDE.
- DESIGN GEOMETRY MINIMUM FEATURE SIZES:
TRACE WIDTH 10 MILS
HOLE-TO-HOLE 15 MILS
SILKSCREEN LINE 8 MILS
TRACE-TO-TRACE; TRACE-TO-PAD; PAD-TO-PAD 10 MILS
BOARD EDGE-TO-COPPER 20 MILS
SILKSCREEN-TO-BARE COPPER 8 MILS

REVISION HISTORY

- B. DEFAULT TRACE WIDTH INCREASED TO 25 MILS;
SOME TRACE WIDTHS FURTHER INCREASED. TRACE AND
COMPONENT LOCATIONS ADJUSTED TO MAINTAIN SPACING.

A. WORKING DWG FOR PRELIMINARY DEVELOPMENT.
NOT RELEASED.

Title		
SWOPA DISC OPAMP THD(1) PWB		
Size	Number	Rev
8.5x14	SWOPA2885PWB1	B
Date	Thu May 09, 2013	Drawn by D. Chisholm
File	SWOPA_Post2885PWB_B.pcb	Sheet of