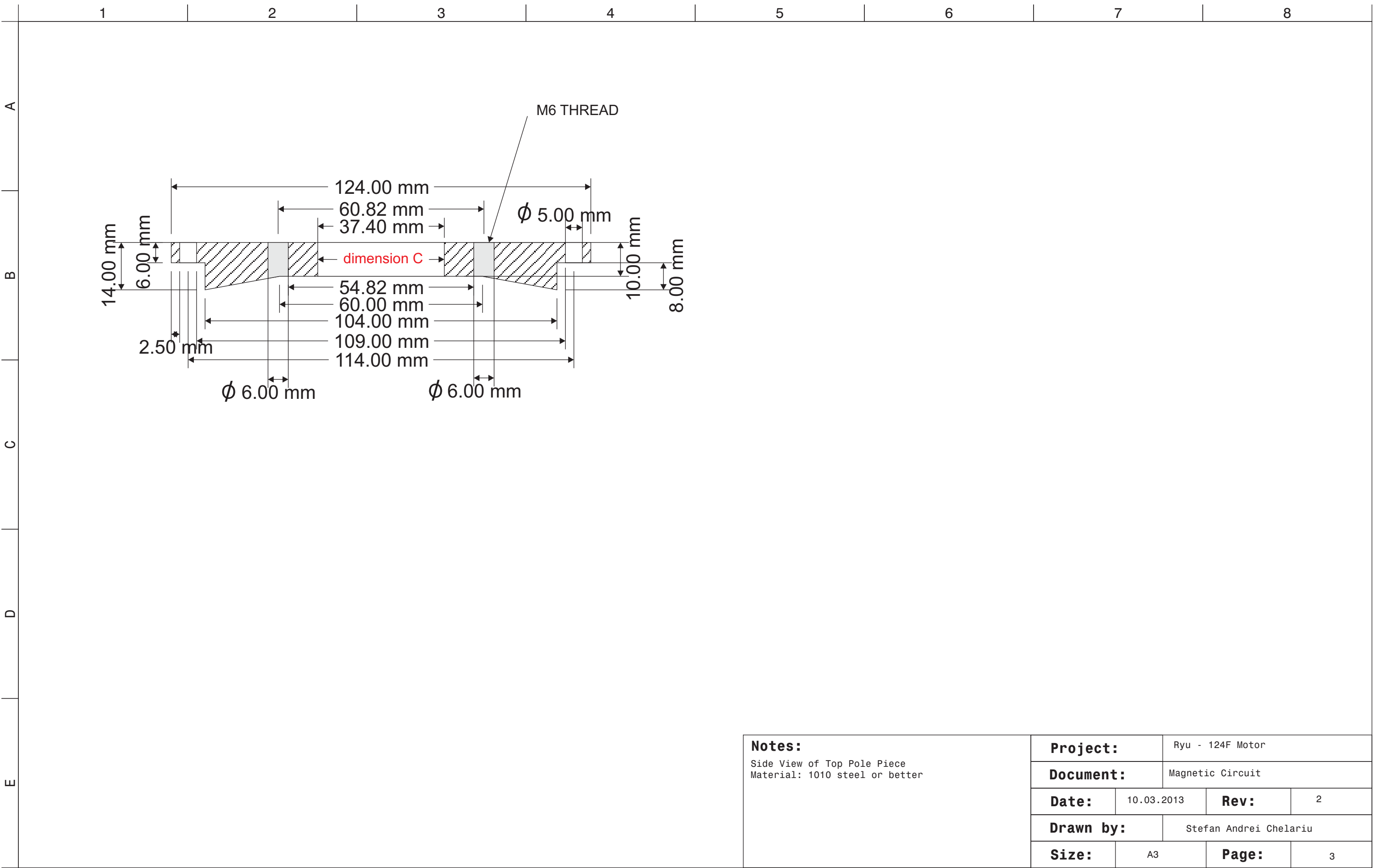


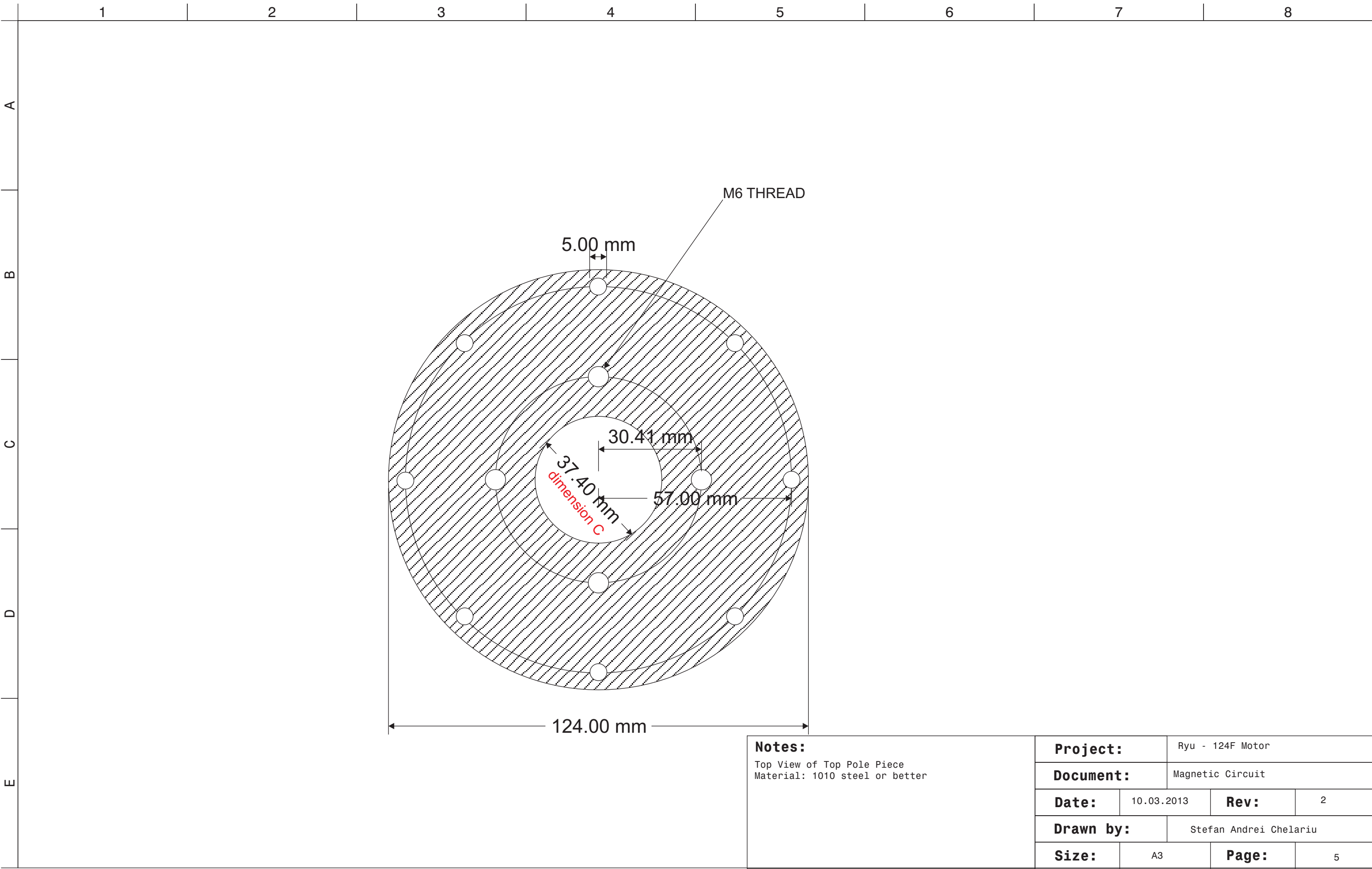
Notes: Bottom View of Bottom Pole Piece Material: 1010 steel or better	Project:		Ryu - 124F Motor	
	Document:		Magnetic Circuit	
	Date:	10.03.2013	Rev:	2
	Drawn by:		Stefan Andrei Chelariu	
	Size:	A3	Page:	2



Notes:

Side View of Top Pole Piece
Material: 1010 steel or better

Project:		Ryu - 124F Motor	
Document:		Magnetic Circuit	
Date:	10.03.2013	Rev:	2
Drawn by:		Stefan Andrei Chelariu	
Size:	A3	Page:	3



Notes: Top View of Top Pole Piece Material: 1010 steel or better	Project:		Ryu - 124F Motor	
	Document:		Magnetic Circuit	
	Date:	10.03.2013	Rev:	2
	Drawn by:		Stefan Andrei Chelariu	
	Size:	A3	Page:	5