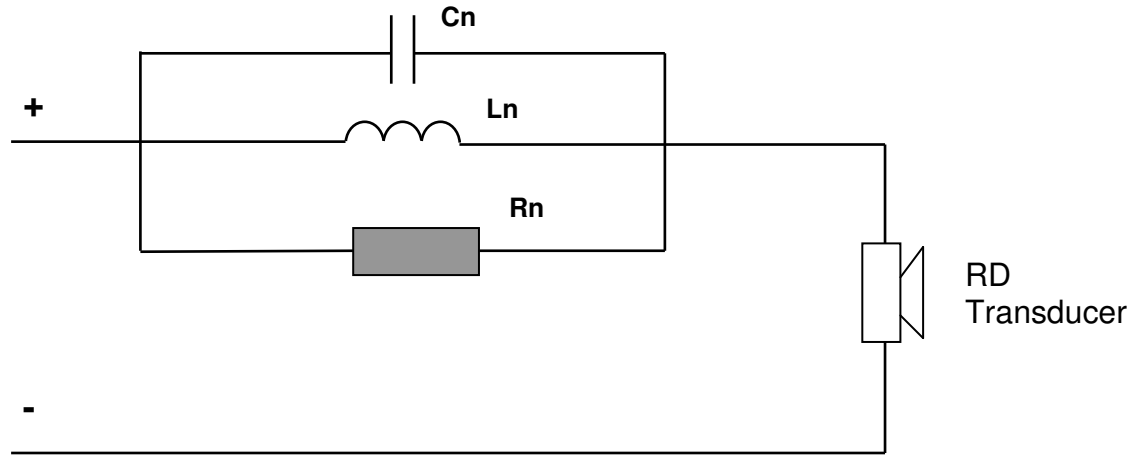


Notch filter schematic and component values for BG planar- magnetic transducers



Transducer	Cn	Ln	Rn
RD75	20	0.05	10
RD50	20	0.05	8
RD 40	15	0.05	15
RD28/28.1	20	0.05	4.7

NOTES:

All capacitor values are in microfarad, $\pm 5\%$ (max acceptable tolerance), 250VDC voltage rating .

All inductor values are in millihenry, wire 20 AWG.

All resistor values are in ohms, nominal power rating is 10W.

All RD drivers exhibit a frontal cavity resonance around 5kHz, naturally inherent due to a magnet structure in front of the diaphragm. Notch filter provides compensation of this resonance yielding smooth frequency response.