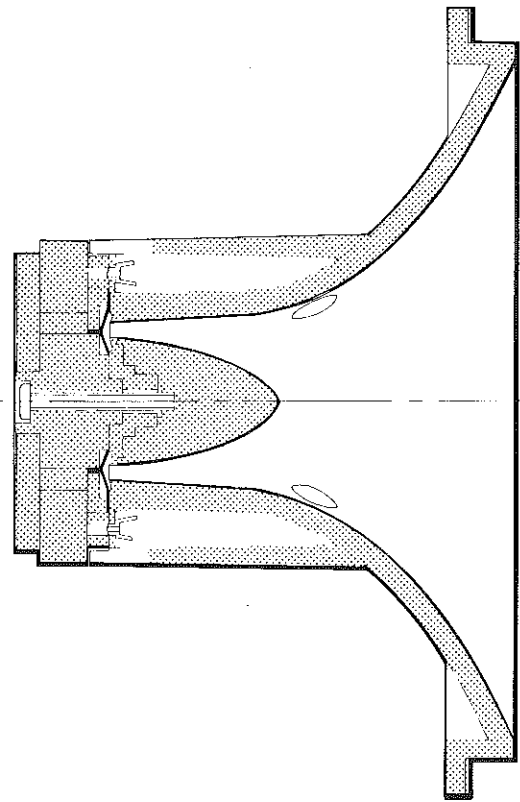
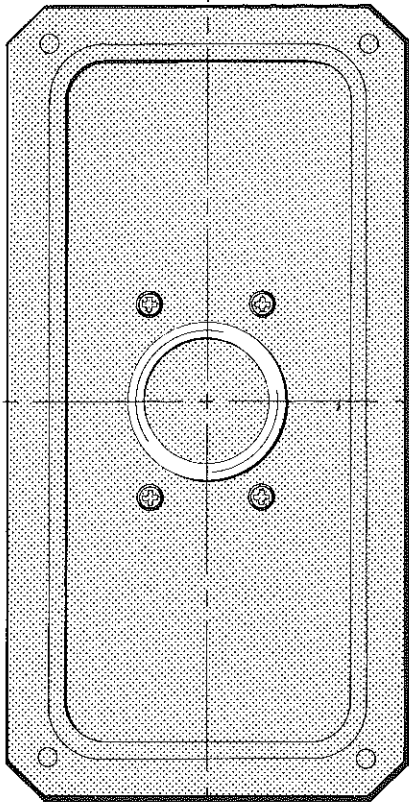


# CELESTION

## POWER DRIVE UNIT RTT50 and RTT50X RING TRANSMISSION TWEETER



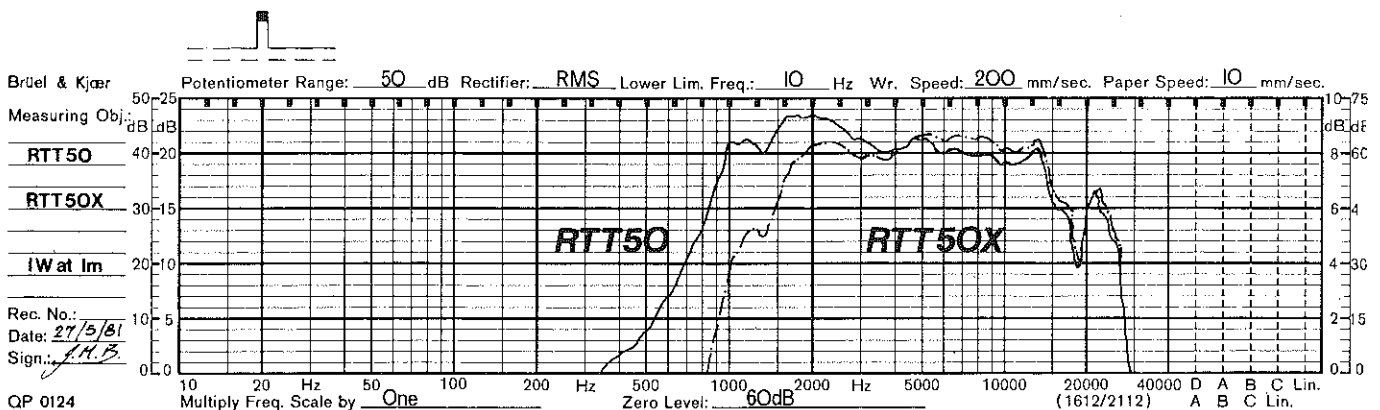
The RTT50 and RTT50X are sophisticated horn loaded midrange/tweeter units of high power handling capability particularly suited to two way systems.

The RTT50X has the added advantage of a carefully engineered crossover at 2kHz (18dB/octave) built into the rear cover.

Smooth extended frequency response is achieved by a unique new diaphragm construction developed using Celestion's powerful laser interferometer.

The rectangular, bullet loaded horn gives tight pattern control, over a 70° by 45° radiation area ensuring maximum audience coverage with minimum feedback.

Frequency range	1.5-15kHz
Amplifier requirements	Up to 50 Watts
Sensitivity	101dB for 1 watt at 1 metre
Output at rated power	117dB at 1 metre
Distortion at 117dB	2nd Harmonic 7%/3rd Harmonic 2%
Radiation pattern	70° x 45°
Impedance	8 or 16 OHM
Recommended crossover	2kHz (18dB/octave)
Voice coil diameter	38mm
Flux density	1.15 tesla
Overall dimensions	110 x 220 x 140 (175 RTT50X)
Mounting	Use template supplied
Fixing screws	4 on 200 x 90mm centres



021 4721841 EX258

## Using the RTT50 and RTT50X

**Crossover.** Celestion recommend a minimum crossover frequency of 2kHz with a slope of 18dB per octave. A suitable crossover is shown in fig. 1a. This network is built into the rear cover of the RTT50X (fig. 1b)

Using this network the RTT50 may be driven by amplifiers of up to 50 watts. For higher power systems the units may be used in multiples. (fig. 2)

Crossovers at higher frequencies can be used, with the bonus that each unit may be used with a larger amplifier. For example, when used in a 3-way system, a crossover of 6kHz (18dB/octave) will allow use with 100 watt amplifiers.

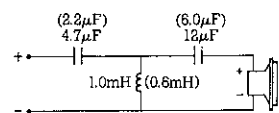


Fig. 1a Recommended filter 8Ω (16Ω)

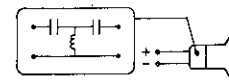
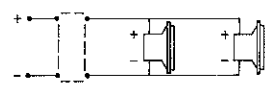
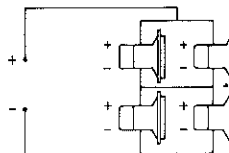


Fig. 1b RTT50X



2 x RTT50 16Ω 8Ω Crossover CX208  
100 watt systems



4 x RTT50X 8Ω 200 watt system.

Fig. 2. Multiple unit use

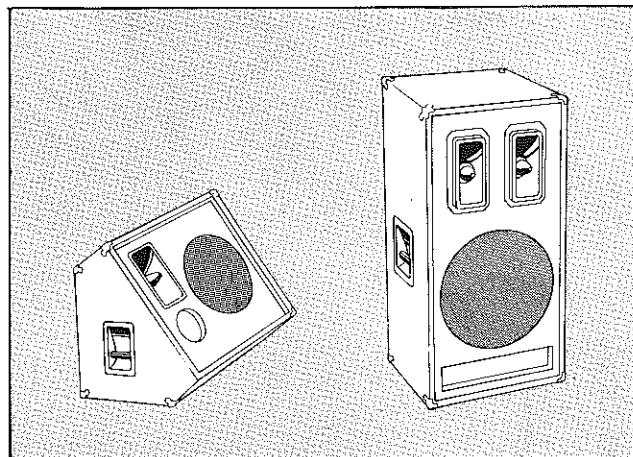
### System 1

Using the Celestion RTT50 ring transmission tweeter singly or in pairs in a low cost monitor or disco cabinet.

- 1 x RTT50, 8Ω
- 1 x G12-80CE, 8Ω

- or 2 x RTT50, 16Ω
- 1 x G15-100CE, 8Ω

Crossover as Fig. 1a or use RTT50X

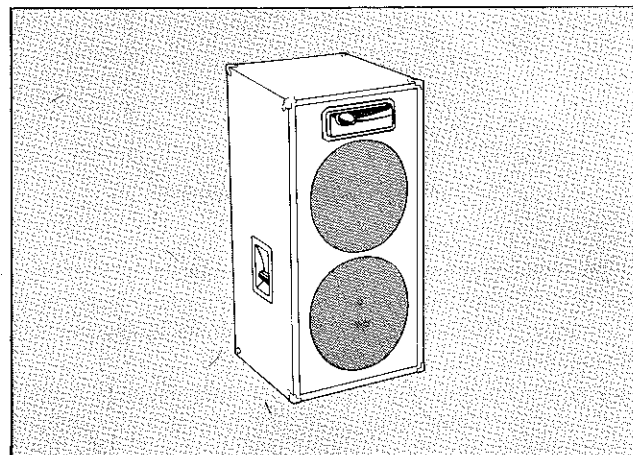


### System 2

2-way vocal system.

- 1 x RTT50, 8Ω
- 2 x G12-80CE, 16Ω

Crossover Celestion CX208

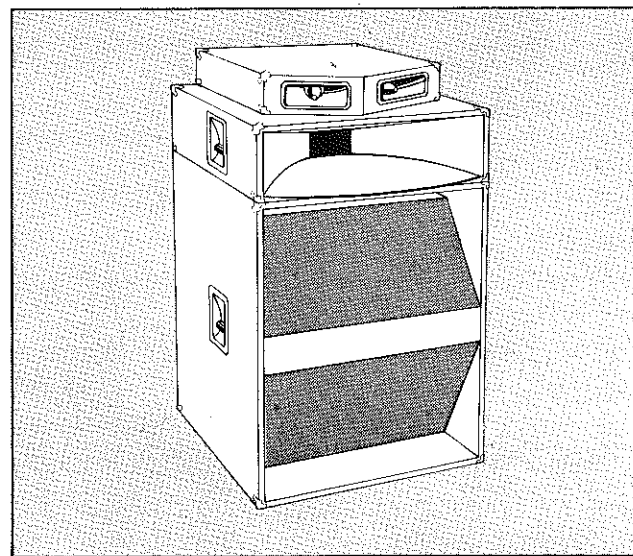


### System 3

Compact stage PA system.

- 2 x RTT50, 16Ω
- 1 x RH500 with DCR100, 8Ω
- 1 x P15-250 in W-bin., 8Ω

Crossover Celestion CX408  
or 3-way active crossover



For cabinet design and system recommendations write to:  
Technical Advice, Rola Celestion Ltd.  
Ditton Works, Foxhall Road, Ipswich, Suffolk IP3 8JP,  
England, or Telephone Ipswich (0473) 73131

Celestion policy is one of continuous improvement and the Company reserves the right to modify specifications without notice. Certain design features of this product have patents pending.