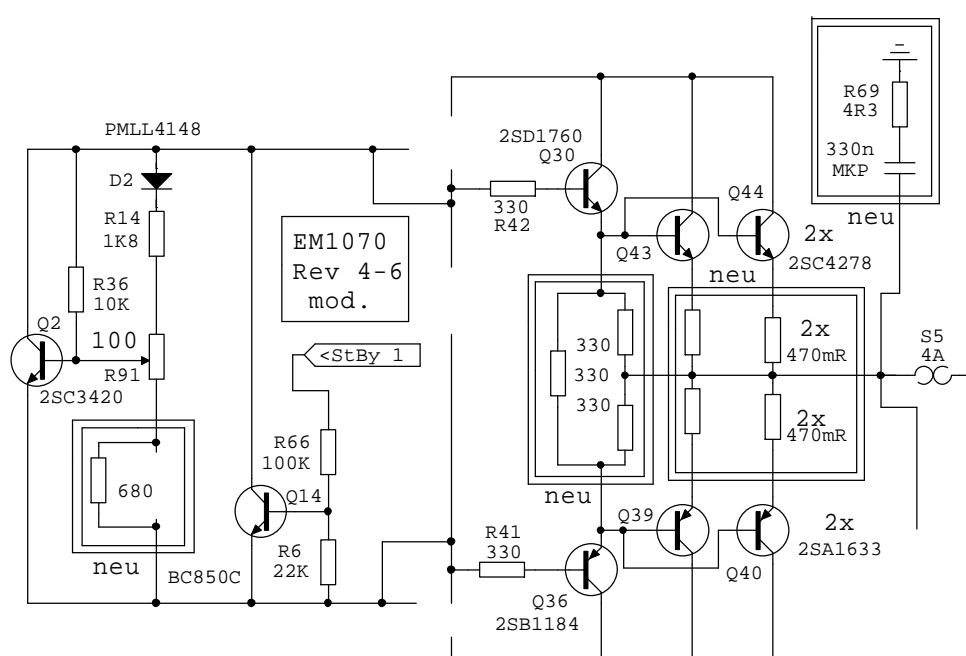
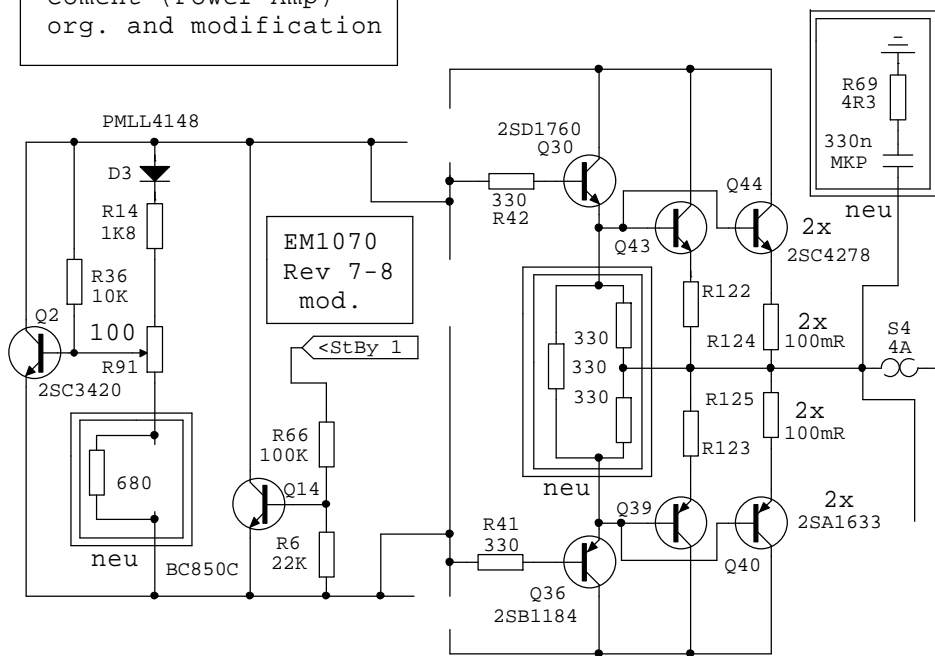
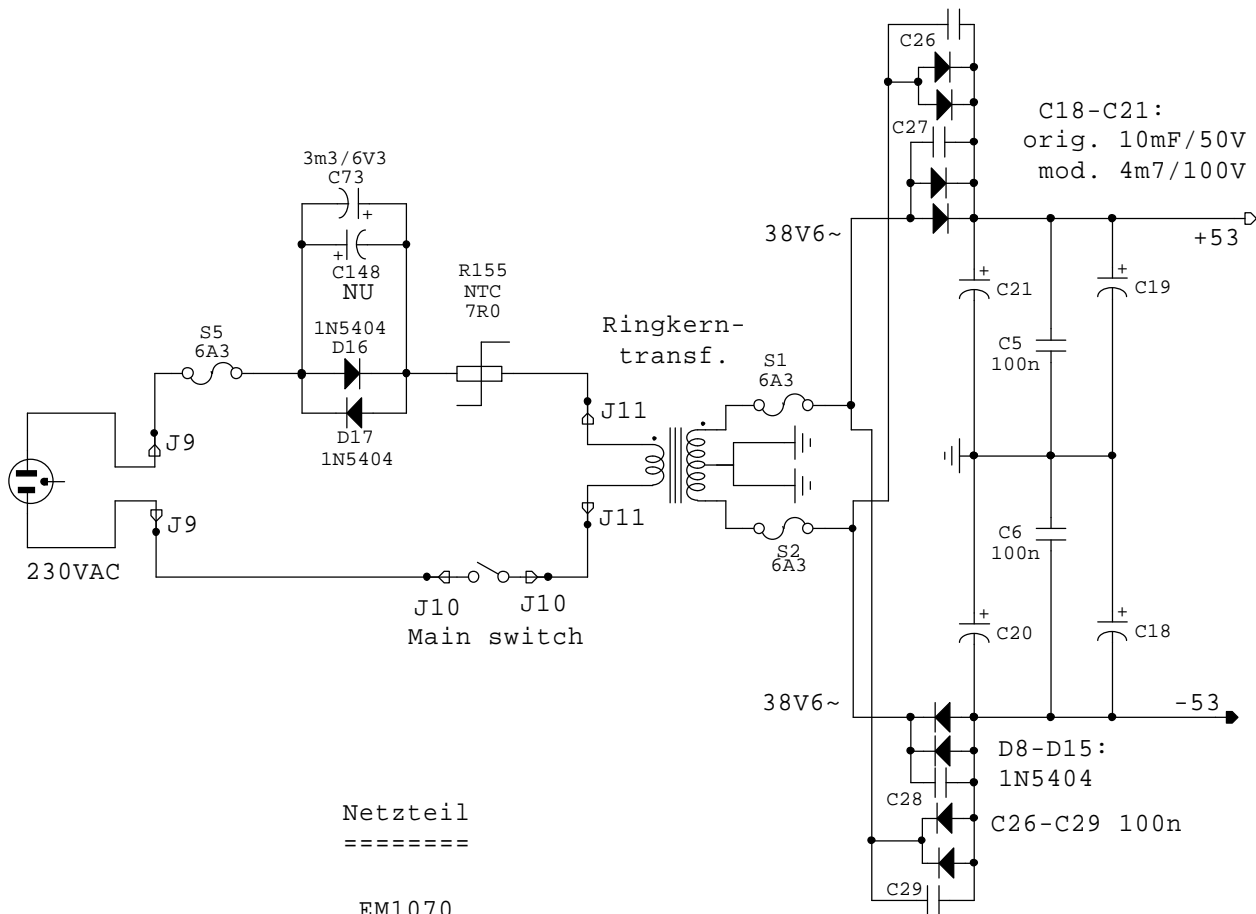


Right Channel

Thule Audio Ampdrive
(Amp3 integr. Amp)
Coment (Power Amp)
orig. and modification



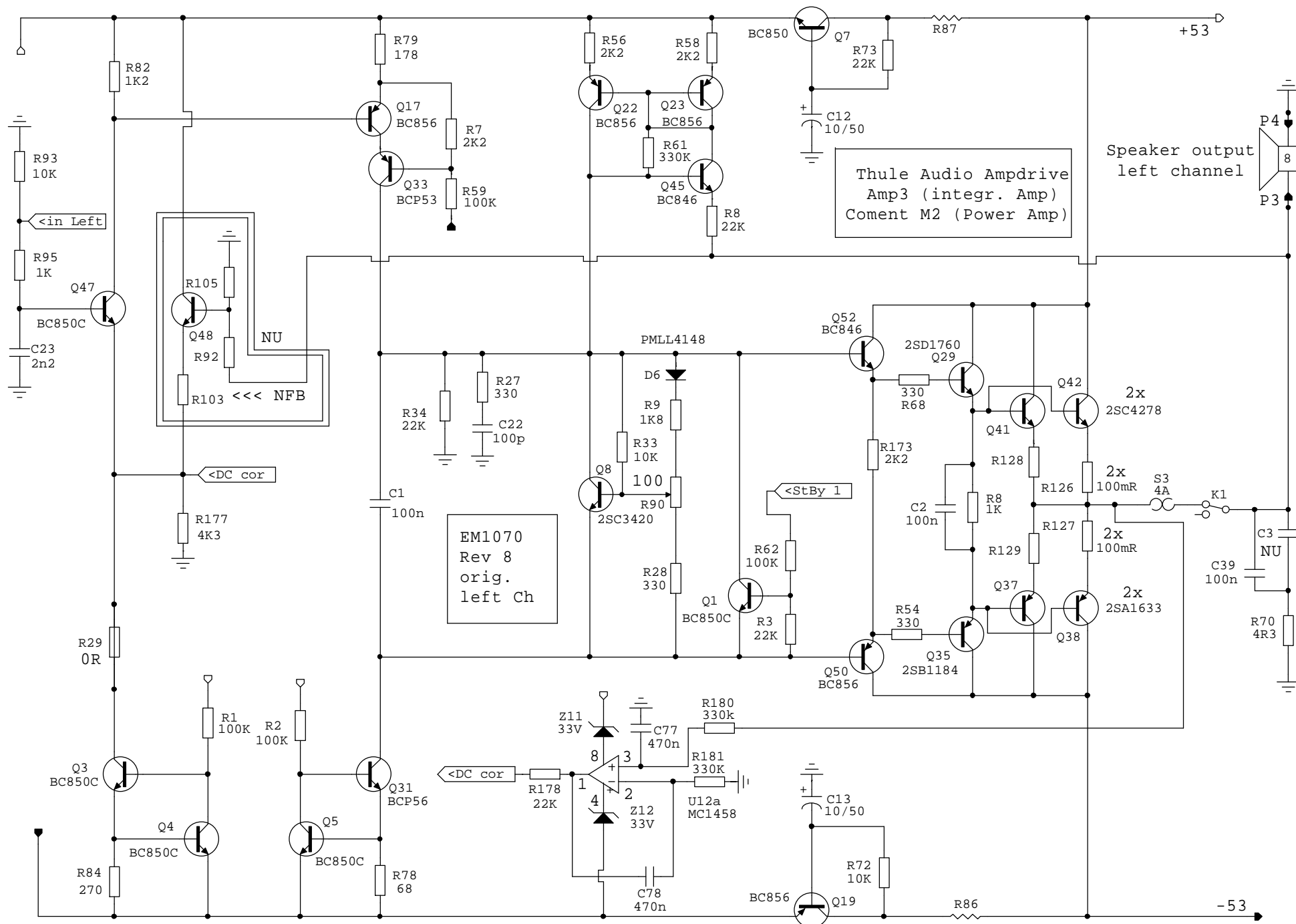


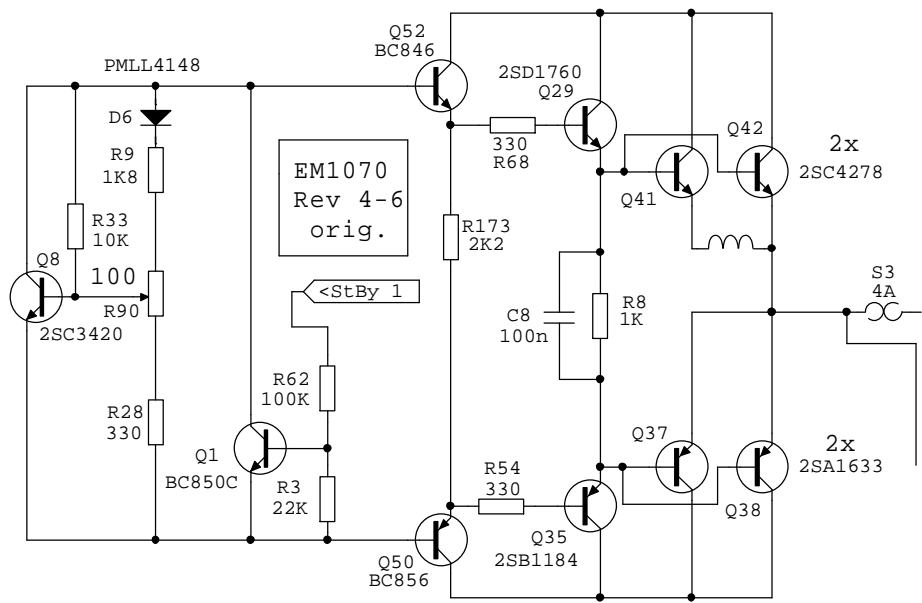
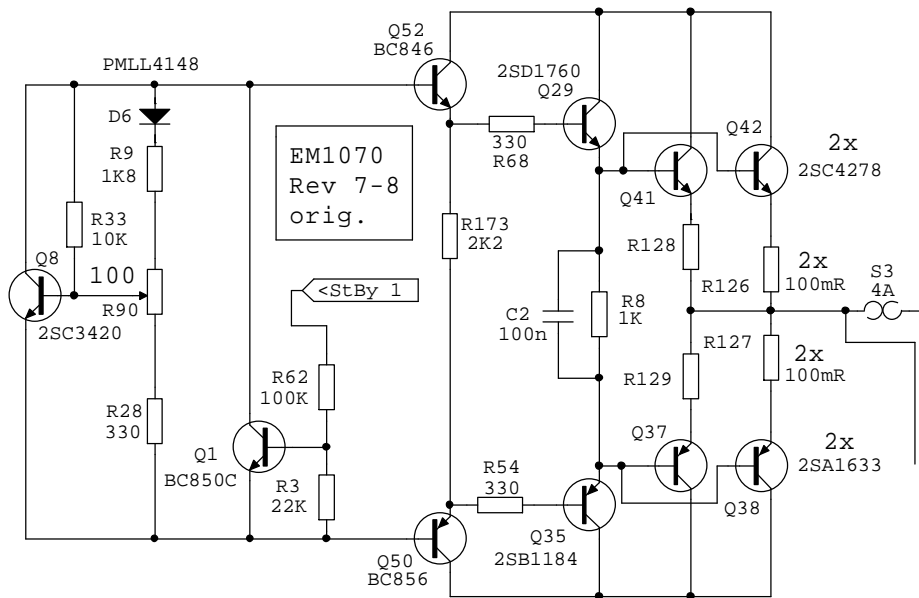
Netzteil
=====

EM1070
Rev. 4-6
Rev. 7-8

Amp3 (Ampdrive),
Amp2 (Start) wie Amp3,
jedoch anstatt +/-53V
nur +/-47V sowie nur
4x1N5404 und 2x 10mF/50V
eingesetzt, bleibt
unverändert zum orig.

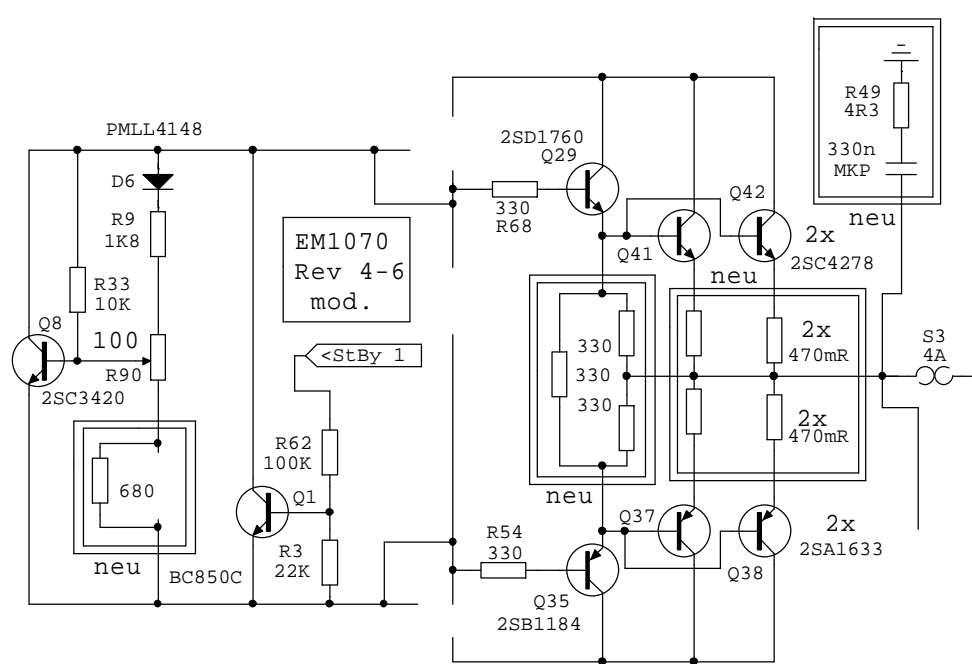
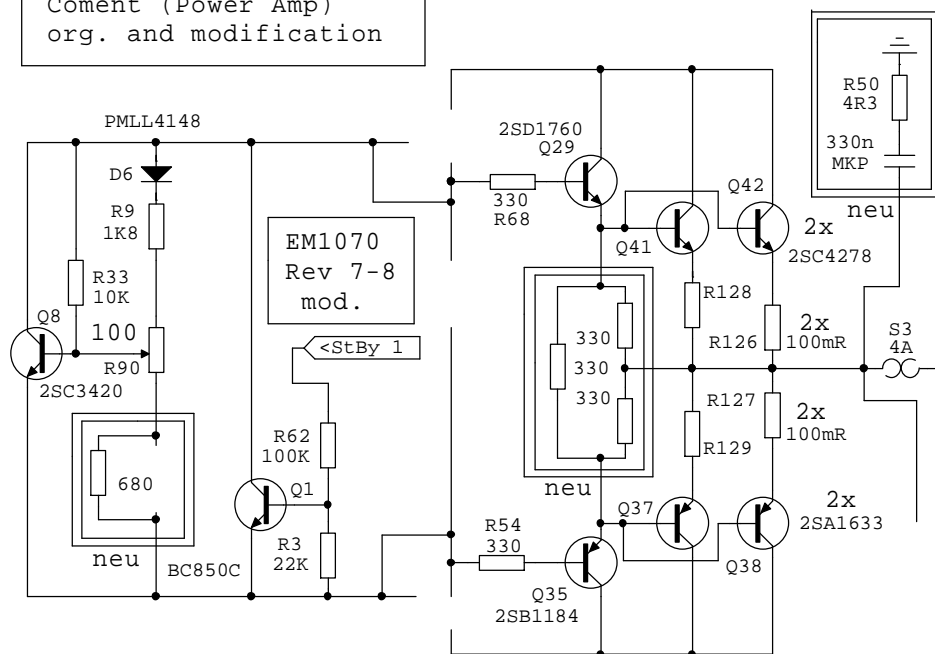
Ringkerntransf.:
Amp3 (Ampdrive): Lübecke RTD500-28873
2x34V/2x250VA (WH-BU und YE-GN)
Amp2 (Start): TOROID TI73043-B
2x33V/1x350VA IN 9806





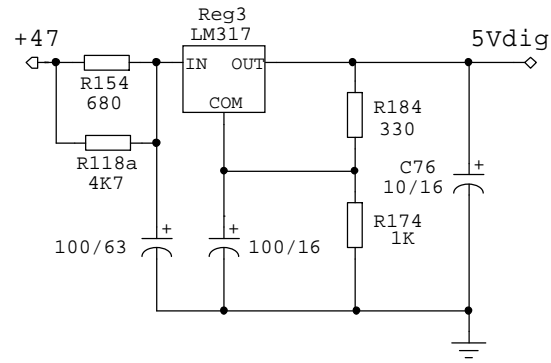
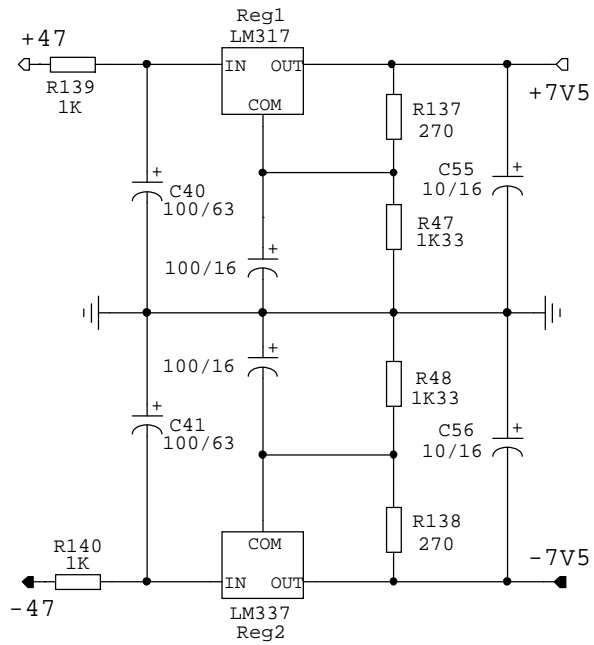
Left Channel

Thule Audio Ampdrive
(Amp3 integr. Amp)
Coment (Power Amp)
org. and modification



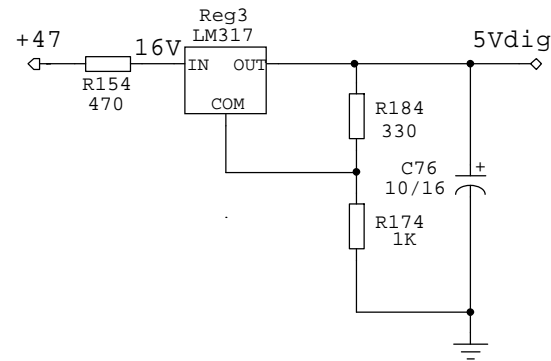
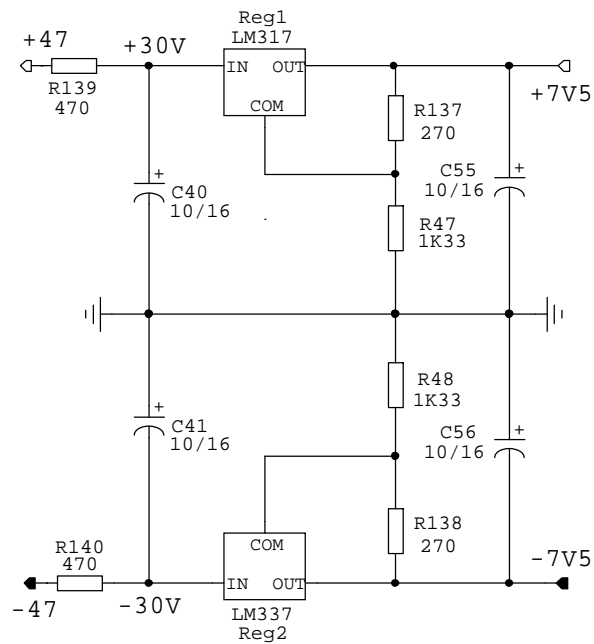
Spannungsregelung

=====



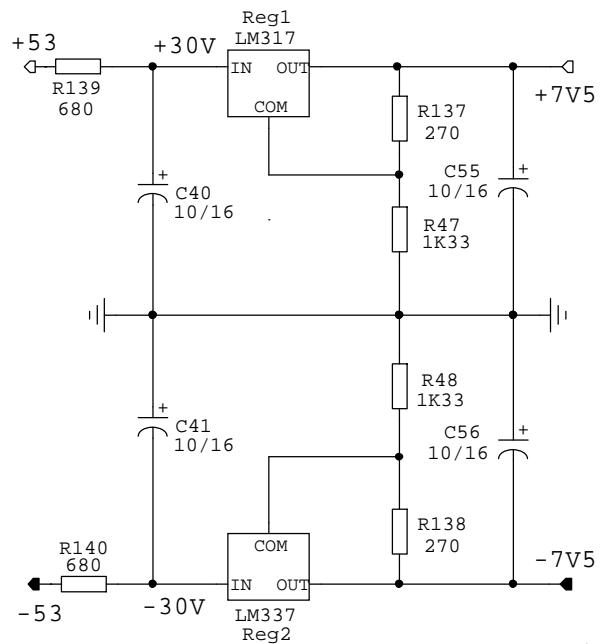
Amp2(Start)
mod.

EM1070
Rev. 4-6
Rev. 7-8

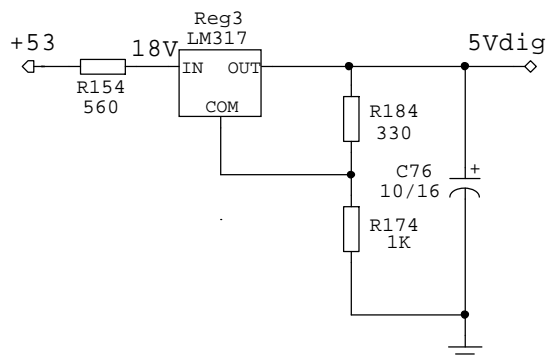


Amp2(Start)
orig.

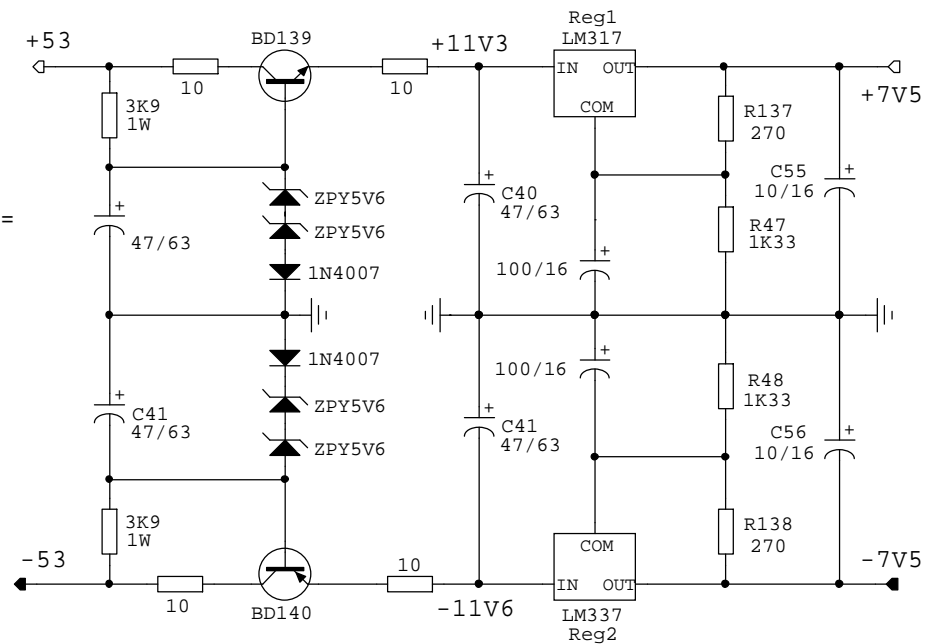
EM1070
Rev. 4-6
Rev. 7-8



EM1070
Amp3 (Ampdrive) Rev. 4-6
orig. Rev. 7-8



Spannungsregelung
=====



Amp3 (Ampdrive)
mod.

EM1070
Rev. 4-6
Rev. 7-8

