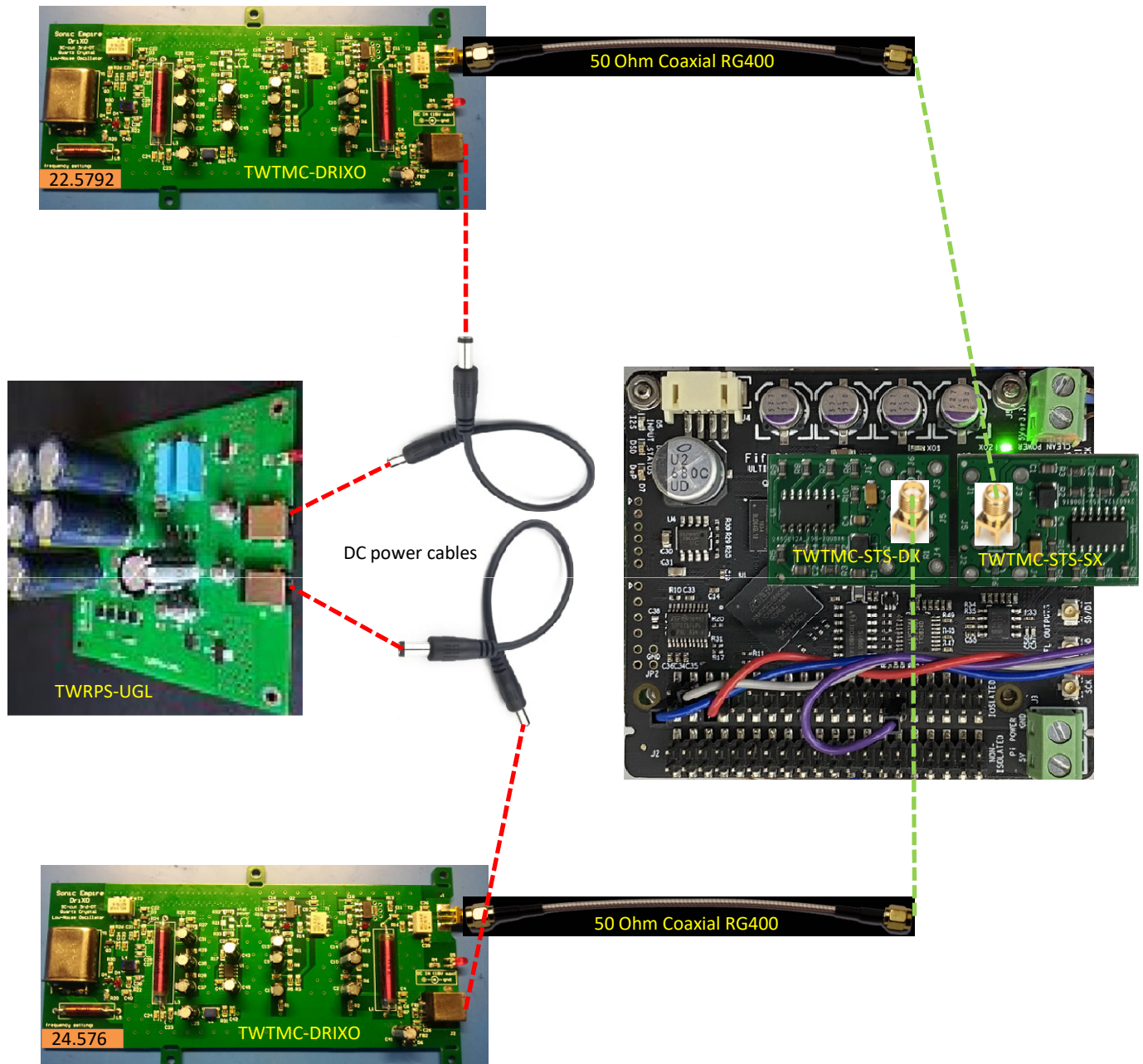
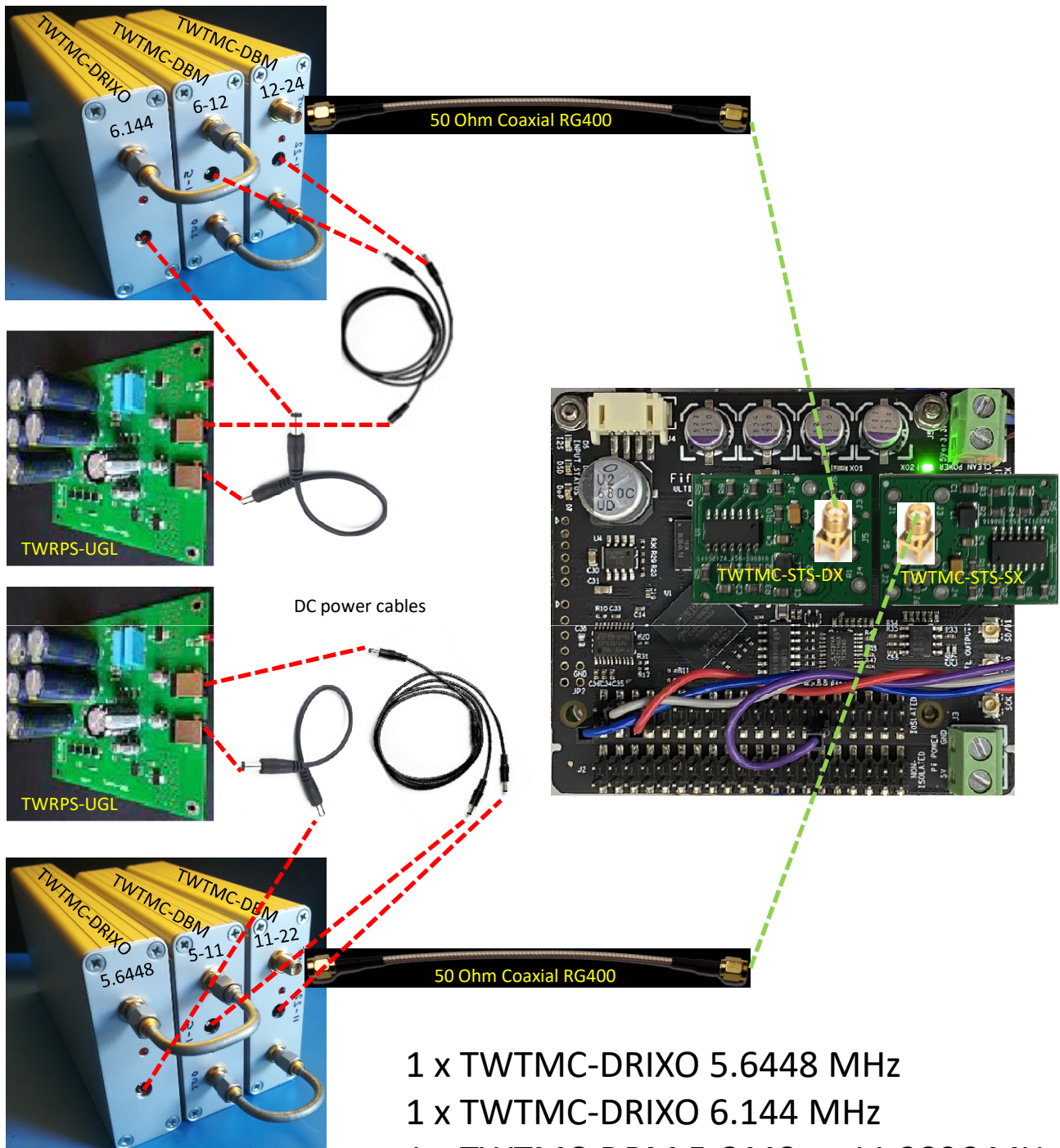


FifoPi master clock connections (22.5792 + 24.576 MHz)
2 oscillators + 2 sine to square converters + 1 power supply



- 1 x TWTMC-DRIXO 22.5792 MHz
- 1 x TWTMC-DRIXO 24.576 MHz
- 1 x TWTMC-STX-SX
- 1 x TWTMC-STX-DX
- 1 x TWRPS-UGL

FifoPi master clock connections (22.5792 + 24.576 MHz)
 2 oscillators + 4 frequency doublers +
 2 sine to square converters + 2 power supply



- 1 x TWTMC-DRIXO 5.6448 MHz
- 1 x TWTMC-DRIXO 6.144 MHz
- 1 x TWTMC-DBM 5.6448 to 11.2896 MHz
- 1 x TWTMC-DBM 11.2896 to 22.5792 MHz
- 1 x TWTMC-DBM 6.144 to 12.288 MHz
- 1 x TWTMC-DBM 12.288 to 24.576 MHz
- 1 x TWTMC-ST-SX + 1 x TWTMC-ST-DX
- 2 x TWRPS-UGL