

## LUX Audio of America Ltd.

EXECUTIVE OFFICES

160 Dupont Street • Plainview, New York 11803 • (516) 822-7070

April 26, 1978

TO: ALL LUX SERVICE STATIONS

SUBJECT: ADJUSTMENT FOR UNSTABLE SPEED ON PD-441/PD-444

It has been brought to our attention that occasionally, the servo lock system may become intermittent or cut out completely on the PD-441 and PD-444. Should you encounter this situation, the remedial action is as follows:

1. Remove the name plate from the motor cover located on the underside of the unit.
2. Remove the motor cover (be careful not to damage the rubber bushing).
3. Adjust the D.C. voltage on both sides of R12 on the circular Printed Circuit Board to equal:

<u>Speed</u>	<u>Adjustment</u>	<u>Voltage</u>
45 rpm	VR02	8.5v at 10°C (50°F)
33 1/3 rpm	VR01	7.5 volts at 20°C (68°F) 6.0v at 30°C (86°F)

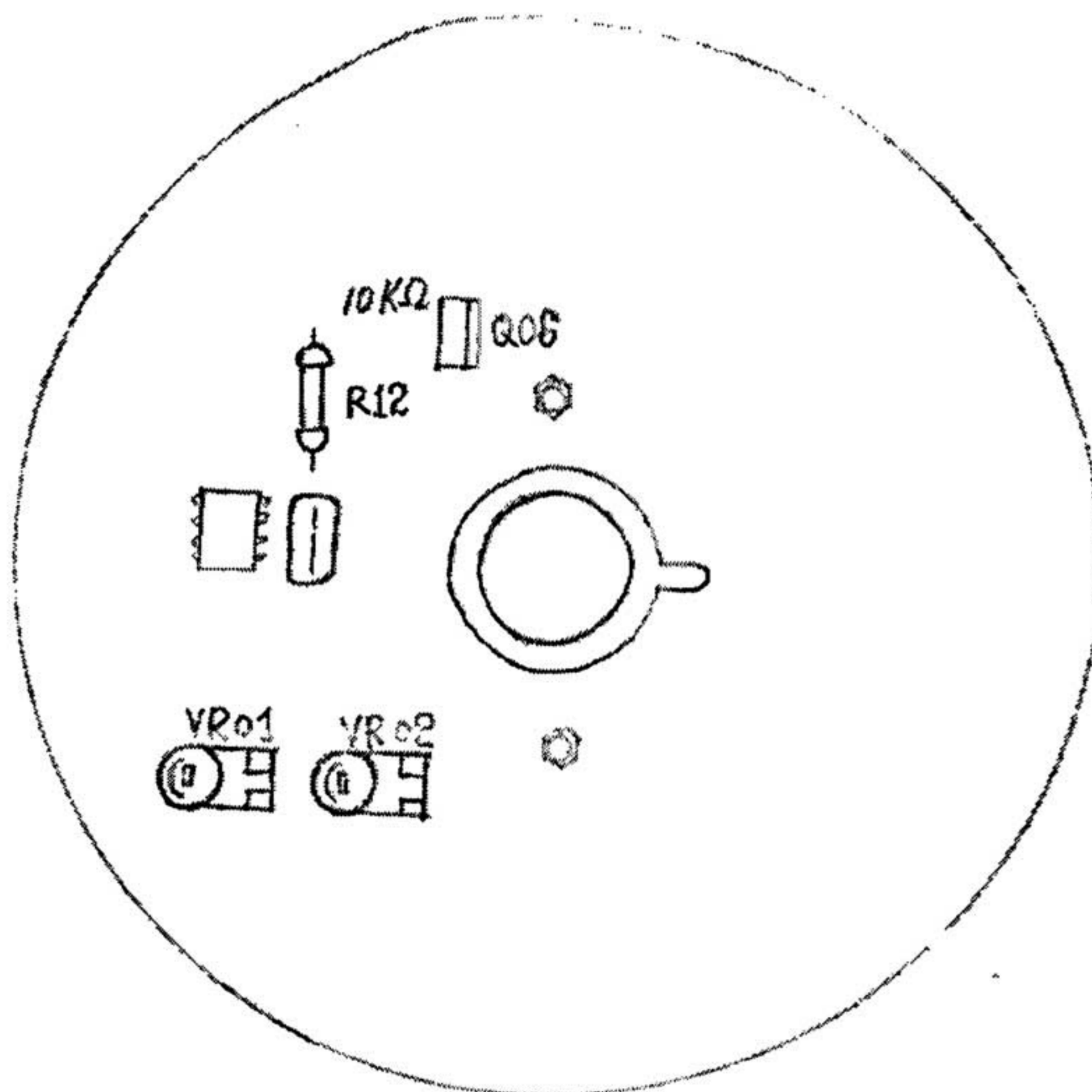
Note: Variable Resistor (VR) must be turned very slowly. 33 1/3 rpm should be set first and then 45 rpm. Also, the platter of the unit must be in place and turning when making this adjustment. I realize that this is difficult but possibly having the unit right side up and reaching underneath to make the adjustment and measurements.

If I may be of any service to you, please do not hesitate to contact me immediately.

Sincerely,

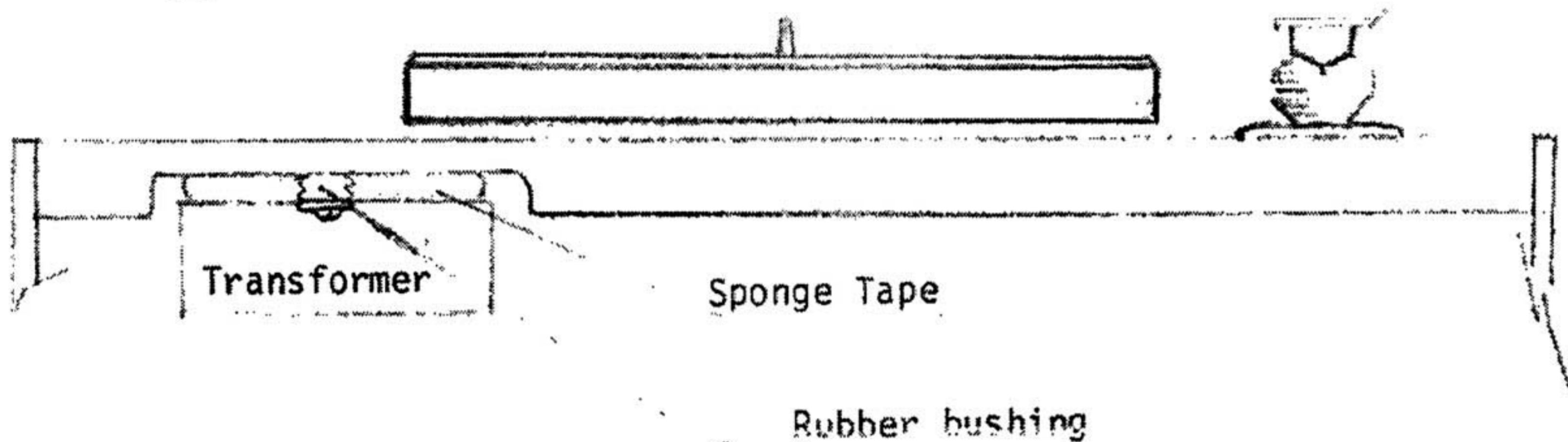
RK:sm  
cc: All Lux Representatives

  
Richard Kawatani  
Sales Technician



PD-272

Tonearm



Transformer

Rubber Bushing

