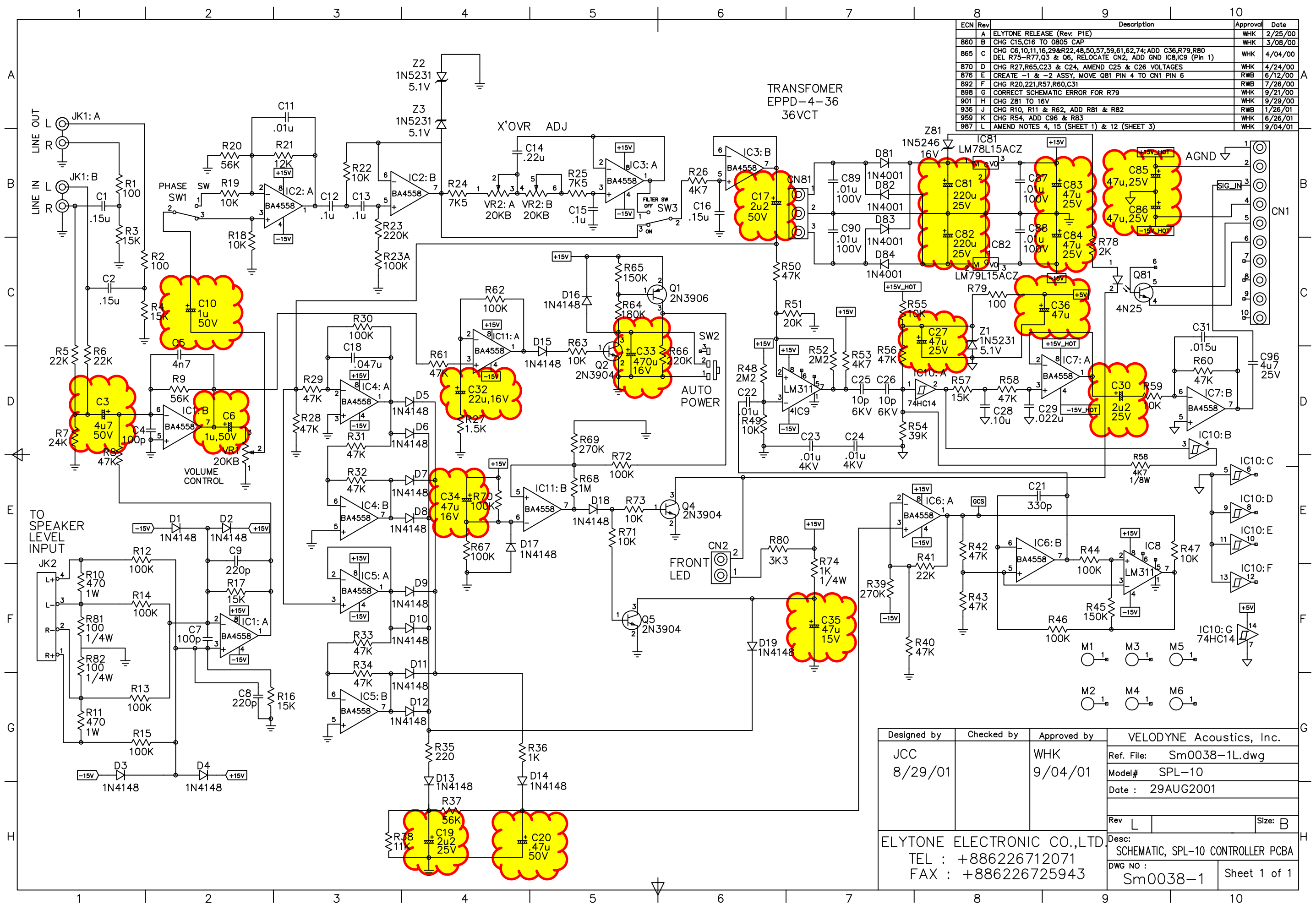


ECN	Rev	Description	Approval	Date
A		ELYTONE RELEASE (Rev. P1E)	WHK	2/25/00
B		CHG C15,C16 TO 0805 CAP	WHK	3/08/00
C		CHG C6,10,11,16,29&R22,48,50,57,59,61,62,74; ADD C36,R79,R80 DEL R75-R77,Q3 & Q6, RELOCATE CN2, ADD GND IC8,IC9 (Pin 1)	WHK	4/04/00
D		CHG R27,R65,C23 & C24, AMEND C25 & C26 VOLTAGES	WHK	4/24/00
E		CREATE -1 & -2 ASSY, MOVE Q81 PIN 4 TO CN1 PIN 6	RWB	6/12/00
F		CHG R20,Z1,R57,R60,C31	RWB	7/26/00
G		CORRECT SCHEMATIC ERROR FOR R79	WHK	9/21/00
H		CHG Z81 TO 16V	WHK	9/29/00
J		CHG R10, R11 & R62, ADD R81 & R82	RWB	1/26/01
K		CHG R54, ADD C96 & R83	WHK	6/26/01
L		AMEND NOTES 4, 15 (SHEET 1) & 12 (SHEET 3)	WHK	9/04/01



Designed by	Checked by	Approved by	VELOCITY Acoustics, Inc.	
JCC		WHK	Ref. File:	Sm0038-1L.dwg
8/29/01		9/04/01	Model#	SPL-10
			Date :	29AUG2001
			Rev	L
			Size:	B
ELYTONE ELECTRONIC CO.,LTD			Desc:	SCHEMATIC, SPL-10 CONTROLLER PCBA
TEL : +886226712071			DWG NO :	Sm0038-1
FAX : +886226725943				Sheet 1 of 1